

# BALTIC EXPORT



2018

BALTIC**EXPORT**.COM

Latvia



BALTIC BUSINESS DIRECTORY

First Choice Infertility Treatment and  
Reproductive Genetics Clinic



- Infertility Diagnosis and Infertility Treatment (IUI, IVF, ICSI)
- Male Infertility Diagnosis and Treatment
- Donor programs – Egg Donation (Egg Bank), Sperm Donation (Sperm Bank), Embryo Donation/Adoption
- Preimplantation Genetic Center (PGS/PGD and other methods)
- Fertility Preservation for Oncology Patients
- Reproductive Tissue Bank
- Prenatal Care
- Urology and Andrology Services, Surgical Treatment
- Gynecology

1 Zala Str., Riga, Latvia

Ph.: +371 67 111 117

Fax: +371 67 809 158

ivfriga@ivfriga.eu [www.ivfriga.eu](http://www.ivfriga.eu)



BALTICEXPORT.COM

in cooperation with:



Latvijas Tālrunis

[Firmas.lv](http://Firmas.lv)

[nozare.lv](http://nozare.lv)  
LETA biznesa portāls



MINISTRY OF FOREIGN AFFAIRS  
OF THE REPUBLIC OF LATVIA

# TABLE OF CONTENTS



About Baltics	4
About Latvia, Lithuania, Estonia	4
Export has risen rapidly; the labour market might slow it down in the future	8
Statistics of Export of the Baltic States in 2017	9
Export growth in Latvia could reach 10%	10
Statistics of the Baltic States 2013-2017	11
Import grows and will grow faster than export.	
On foreign trade in 2017	12
Number of companies drops in Latvia but ratings improve	14
Largest companies in Latvia by industry	16

## LATVIAN COMPANIES BY BRANCHES:



Agriculture, forestry and fishing	18
-----------------------------------	----



Manufacturing	27
Manufacture of food, beverages and tobacco products	27
Manufacture of textiles and leather products, clothing	28
Manufacture of wood products, paper and their equipment	33
Manufacture of chemical products, rubber and plastic products	40
Manufacture of basic metals, metal products and equipment	41
Manufacture of electronic and optical products, machinery n.e.c.	44
Manufacture of vehicles, trailers	45
Manufacture of furniture	46
Other manufacturing	47



Utilities, waste management	48
-----------------------------	----



Building and civil engineering	49
--------------------------------	----



Sale and distribution	52
-----------------------	----



Transport, warehousing and support activities for transportation	54
--	----



Art, entertainment, hospitality and catering	57
--	----



Business, scientific and technical services, education	59
--	----



Finance and insurance	60
-----------------------	----



Health care, pharmaceuticals, social services	63
---	----

1st cover photo: [www.shutterstock.com](http://www.shutterstock.com)

Published by *Latvijas Tālrūnis Ltd*

Blaumaņa iela 38/40, Rīga, LV 1011

Phone: +371 67770711, fax: +371 67770727

Printed by *Jelgavas Tipogrāfija Ltd*

"Baltic Export" annual book issued in cooperation with  
*Nozare.lv* – LETA business portal and *Firmas.lv Ltd*







## Address by the Minister of Economy ARVILS AŠERADENS to the edition of Baltic Export

It is gratifying to note that the growth of Latvia in 2017 has become considerably faster than in previous years. Gross domestic product increased by 4.5% in 2017, which is a significant indicator – it is the fastest increase over the last 6 years. Export, private and public consumption are steadily growing. Export volumes have reached the highest level ever. After a decline in the past two years, rapid growth in 2017 was also observed in investments. Positive trends in exports contribute to the development of the manufacturing industry as well as other export-oriented sectors – agriculture, forestry, and transport.

Taking favourable conjuncture into account – economic growth in the EU countries, which is the largest commodity market of Latvia, as well as available EU fund investments – 2018 will also see rapid growth, and GDP growth could reach 4.2%, according to expert forecasts of the Ministry of Economics.

Economic growth is driven by export. Latvia's exports grew by 47% over the period from 2010 to 2017, and in 2017 exceeded the pre-crisis level by almost 50%. In the period from 2010 to 2017, export growth was observed in all major commodity groups. Export of machinery, devices and electrical equipment, as well as export of agricultural and food products, increased the most during this period. Significant increase was also observed in exports of chemical products (by 76%), export of vehicles (by 73%), export of wood and its' products (by 48%).

The degree of diversification of export of Latvian goods is also improving. In the years before the crisis, export growth was dominated by some of the largest export groups, such as wood and metal. During the crisis, export volumes dropped in all commodity groups. On the other hand, with the resumption of growth, export growth is more similar in terms of product groups, which indicates a higher degree of diversification of export. It should be noted that in recent years this indicator in Latvia corresponds to the average level of EU countries.

Traditionally, the largest export partners of Latvian goods are EU countries, to which Latvia exports more than 70% of all export products.

Exports to Lithuania and Estonia account for almost 30% of exports of goods. Latvia's share of exports to the CIS countries has fallen in comparison with 2010. In 2017, Latvia exported 13% of total exports to CIS countries.

Export of Latvian services in recent years account for about 30% of total exports of goods and services. 40% of all exports of services are constituted by transportation services. However, trends in recent years have shown that the share of these services is decreasing. Since 2010, more and more of the total exports of services are generated by revenue from tourists entering Latvia, as well as by the IT service sector.

In support of exporters and mitigating various types of risks in foreign markets, a short-term (up to 2 years) export-credit guarantee program is being successfully implemented, which in autumn 2017 extended to large enterprises and prolonged to the end of 2022. From the fall of 2017, ALTUM range of services is complemented by medium and long-term export credit guarantees.

There are 20 independent foreign representations operating in support of Latvian entrepreneurs in identifying export markets. The international contractual base for economic cooperation has been expanded – several intergovernmental agreements and memoranda of cooperation have been signed, which will allow Latvian businessmen to successfully acquire new export markets in Arab countries and the Far East.

In order to keep at least 4-5% of gross domestic product growth in the medium term, it is necessary to systematically continue to work on the implementation of the goals set out in the Government declaration. Promotion of export and investment, increasing productivity and promoting human capital development are key factors for further work.

Reforms in the education system and labour market are crucial for building a sustainable model to prepare for and adapt to structural change. The ongoing reforms in the education system must be continued, with emphasis on enhancing the quality of the acquisition of physical and natural sciences in basic and secondary education as well as the development of adult education.

One of the priorities of the Ministry of Economics is the improvement of the business environment. Targeted reforms and close cooperation with entrepreneurs have allowed Latvia to achieve high results – in the World Bank's "Doing Business 2018" study. Latvia ranked 19th in the competition of 190 countries. In turn, Latvia holds the 8th place among the EU member states.

Our goal is not to stop at the achievement, but to continue working on improving the business environment. The vision of the Ministry of Economics is to create an excellent business environment and move towards an innovative economic model. Therefore, we have defined five priority actions for further development of the business environment – strengthening of the rule of law, development of customer oriented state administration, digitalisation of public services, openness of the business environment and raising the competitiveness of the tax system.

In conclusion, I want to emphasize that in order to achieve the goals, Ministry of Economics will continue to engage in dialogue with entrepreneurs, non-governmental organizations and other members of the public. Only in this way can sustainable growth be ensured in the long term.



The Republic of Latvia is located in northeast Europe on the coast of the Baltic Sea. Latvia is bordered to the north with Estonia, to the east with Russia, to the southeast with Belarus and to the south with Lithuania. The total stretch of Latvia's land-borders is 1369 kilometres. The country's coastline is 498 kilometres.

#### Latvia's economy

- During the 1990s, Latvia created a functional free-market economy, which has been a crucial pre-condition for economic growth.
- The country's economic development priorities are largely based on its geographical position in the middle of the Baltic States, as well as being a "gateway" between Eastern and Western markets.
- Latvia is a member of the world's most important international organizations, which guarantee political and economic stability for investors.
- Latvia's most important foreign trade partners are Lithuania, Estonia, Russia and Germany.
- In 2008, a serious economic crisis hit Latvia. As a result, the country's healthcare, education and welfare budgets were substantially reduced. At the end of the year, international lenders agreed to loan Latvia EUR 7,5 billion, but only EUR 4,5 billion of these available funds were borrowed by Latvia.
- As Latvia's economy grew in 2013, there was an increased demand for the workforce, while unemployment also continued to drop.
- The fastest growing and most perspective sectors in Latvia's economy include the forestry industry, the production of ecological food products, transportation services, as well as chemical and pharmaceutical industries.
- Riga International Airport has the largest air traffic network in the Baltics, and is the region's hub.

#### Membership of international organizations

- On September 18, 1991, Latvia became a full-fledged member of the United Nations.
- On March 29, 2004, Latvia became a member of NATO.
- On May 4, 2004, Latvia became a member of the European Union.
- On December 21, 2007, Latvia became a member of the Schengen-zone. Latvia is also a member of the World Trade Organization.
- On January 1, 2014, Latvia became a member of the euro-zone.

#### Political system

- Latvia is a parliamentary democracy, where the president is the head of state, while the prime minister and Cabinet of Ministers hold executive power.
- The highest legislative power is the parliament (*Saeima*), which is made up of 100 members, who are elected to four-year terms. Parliament members are elected by proportional representation from party lists by popular vote.
- The main players of Latvian politics is made up of centre and centre-right parties, however, the influence of left-orientated parties has increased the past several years. Six political parties have been voted

into the current parliament. Local government members are voted in every four years. The previous parliamentary elections took place on October 4, 2014, while the next local government elections was held on June 3, 2017.

#### History

- The current territory of Latvia has been inhabited since 9,000 B.C. In approximately 2000 B.C., the first Baltic tribes began to inhabit the territory. The Latvian language belongs to the Baltic language branch of the Indo-European tree family. Due to its strategically advantageous position on the Baltic Sea, Latvia has endured multiple conquests in its history. The territory of modern day Latvia has been at one time or another part of the Polish, Russian, Swedish and German empires.
- After hundreds of years of being occupied by foreign powers, the independent and democratic Republic of Latvia was proclaimed on November 18, 1918. However, on June 17, 1940, Latvia was occupied by the Soviet Union. On August 5, 1940, the territory of Latvia was incorporated into the Soviet Union. In 1941 and 1949, almost 60,000 persons were deported from the territory of Latvia to Siberia by the Soviet regime. In their place, residents from all over Russia were then brought into Latvia in a gradual and deliberate campaign of Russification. This substantially changed the ethnic and social makeup of the territory of Latvia – 77% of the country's residents were ethnic Latvians in the 1930s, but this number reduced to only 52% by 1989.
- On May 4, 1990, a declaration of the restoration of Latvia's independence was passed, which foresaw the "de facto" independence of Latvia. The Republic of Latvia restored full independence on August 21, 1991.

#### Nature

- Latvian residents are extremely proud of their nature, which can be seen in all of its splendour in the many national parks and nature reserves throughout the territory.
- Latvia's main natural resource is its forests – about 50% of the country's territory, or 29,555 square kilometres, is covered in forests. 54% of the trees growing in Latvia are coniferous, while 46% are deciduous.
- Latvia's white sandy beaches also ensure the country's status as a Baltic coastal resort country. Latvia also has about 3,000 lakes scattered throughout the country.
- Latvia has a well-kept and clean environment, which is a big reason for the country's abundant flora and fauna. There are over 14,000 animal species registered in Latvia.

#### Culture and sports

- Riga is a historic city and a former member of the Hanseatic League, which is famous for its Art Nouveau architecture. It is the largest city in the Baltics and has been included on UNESCO's World Heritage list. In 2001, the Latvian capital celebrated its 800th anniversary, and it was the European Capital of Culture in 2014.
- Latvians can be proud of their cultural heritage – once every five years, tens of thousands of choirs, singers and folk dancers from every region flock to Riga to participate in the Latvian Song and Dance Festival. The country's folklore heritage, collected in the famous Cabinet of Folksongs, has also been included in UNESCO's Memory of the World Registry. Meanwhile, residents and guests of Riga have been known to frequent the many theatre, opera, ballet and musical performances that take place in the city.
- In the classical music scene, Latvia's global image is heightened by such international classical music stars as conductors Andris Nelsons and Mariss Jansons, opera singers Elīna Garanča, Inese Galante and Kristīne Opolais and pianist Vestards Šimkus. Furthermore, the internationally-acclaimed Latvian theatre director Alvis Hermanis has been recognized as one of the best in the business.
- Latvia is also known for producing many top-quality athletes – BMX rider Māris Štrombergs is a two-time Olympic champion, winning the gold at the Beijing and London Olympics. Latvia's Martins Dukurs is currently the top skeleton athlete in the world.



## GENERAL INFORMATION ABOUT LATVIA

<b>Official name:</b>	Republic of Latvia
<b>Area:</b>	64 559 km <sup>2</sup> – land area 62 157 km <sup>2</sup> , internal waters – 2 402 km <sup>2</sup>
<b>Population:</b>	1,95 million (68% live in urban areas, 32% – live in rural areas), population has reduced by 360 000 over the past 10 years, over half (more than 200 000) have emigrated to other countries. 62% of residents are of working age, while 57,5% are economically active. 62% are ethnic Latvians. Second largest ethnic group are Russians, which make up 25,6% of the population. Over 170 ethnic groups live in Latvia. (Data: Central statistical bureau of Latvia, 2017)
<b>Capital:</b>	Rīga (population – 641 400, or a third of the country's residents)
<b>Largest cities:</b>	Daugavpils (84 592 residents), Liepāja (69 443), Jelgava (56 743), Jūrmala (48 606), Ventspils (35 362) (Data: Central statistical bureau of Latvia, 2017)
<b>Administrative division:</b>	Latvia has 110 regions un 9 cities
<b>Basic law:</b>	Constitution, introduced in 1922
<b>Political system:</b>	Parliamentary republic, prime minister and Cabinet of Ministers hold highest executive power, while parliament ( <i>Saeima</i> ) holds legislative power. <i>Saeima</i> is made up of 100 members
<b>Head of state:</b>	President
<b>Currency:</b>	euro
<b>National holidays:</b>	January 1 – New Year's Day; March or April – Easter; May 1 – Labour Day and the convocation of the Constitutional Assembly in 1920; May 4 – Restoration of Independence Day; Second Sunday in May – Mother's Day; June 23 – Midsummer's Eve (Līgo!); June 24 – Midsummer's Day (Jāņi!); November 18 – Independence Day – proclamation of the Republic of Latvia; December 24-26 – Christmas; December 31 – New Year's Eve
<b>Language:</b>	Official language – Latvian, however Russian is also widely used
<b>National flag:</b>	Maroon-white-maroon; it is one of the oldest flags in the world, used as early as the 13th century
<b>Education:</b>	Primary, high school and higher education (primary and high school education state funded). Over 90% of children attend school

<b>Religion:</b>	37% of Latvian residents associate themselves with a religion. Largest religious groups in Latvia in 2008 were Catholics (37%), Lutherans (34%) and Orthodox (27%)
<b>Mineral deposits:</b>	Sand, sand and gravel mixture, peat, dolomite
<b>Time zone:</b>	December through March: GMT + 2 hours (winter time); April through November: GMT + 3 hours (summer time)
<b>Electricity:</b>	220V / 50 Hz
<b>Internet country code:</b>	.lv
<b>GSM:</b>	900 / 1800
<b>International dialing code:</b>	+371
<b>Number of land-line users:</b>	356 000 (2016, International Telecommunication Union)
<b>Number of mobile phone users:</b>	2.59 million (2016, International Telecommunication Union)
<b>Number of Internet users:</b>	79.2% of Latvia's residents have Internet access
<b>Cost of living:</b>	Riga is the 97th most expensive city in the world (Mercer Human Resource Consulting data for 2012)
<b>Diplomatic missions:</b>	Latvia has 46 diplomatic and consular missions abroad: 37 embassies; 6 permanent representations, 1 consulate general and 2 consulates. In Latvia, there are 37 foreign embassies, 11 international organizations, 22 honorary consulates and 3 consulates general.
<b>Emergency phone numbers:</b>	Emergency services ..... 112 Firefighters ..... 01, 110 Police ..... 02, 110, 112 Emergency medical assistance ..... 03, 112, 113 Emergency gas service ..... 114
<b>Distance (by road, from city centre to city centre) from Riga to:</b>	Tallinn ..... 310 km Vilnius ..... 293 km Moscow ..... 935 km Minsk ..... 480 km Warsaw ..... 693 km Berlin ..... 1122 km
<b>Flight times from Riga Airport:</b>	Tallinn ..... 55 min Vilnius ..... 55 min Moscow ..... 1 hr 40 min Minsk ..... 1 hr 15 min Stockholm ..... 1 hr 20 min Frankfurt ..... 2 hr 15 min London ..... 2 hr 50 min Rome ..... 3 hours
<b>Climate:</b>	Latvia has a temperate climate, with maritime climate conditions felt throughout the country. As a result – the weather is cloudier with less sunshine, and temperatures are a bit lower than medium latitude areas. Latvia has four seasons of near equal length. The average temperature in Latvia in 2015 was +7,9°C. The total rainfall in 2015 was 667 millimeters.



### More information about Latvia:

The State President	<a href="http://www.president.lv">www.president.lv</a>
Parliament Saeima	<a href="http://www.saeima.lv">www.saeima.lv</a>
Government	<a href="http://www.mk.gov.lv">www.mk.gov.lv</a>
Ministry of Foreign Affairs	<a href="http://www.mfa.gov.lv">www.mfa.gov.lv</a>

Latvian Institute	<a href="http://www.li.lv">www.li.lv</a>
Latvian Tourism Development Agency	<a href="http://www.tava.gov.lv">www.tava.gov.lv</a>
Latvia's official tourism portal	<a href="http://www.visitlatvia.lv">www.visitlatvia.lv</a>
Central Statistical Bureau	<a href="http://www.csb.lv">www.csb.lv</a>
Latvian Investment and Development Agency	<a href="http://www.liaa.gov.lv">www.liaa.gov.lv</a>



Lithuania is located on the eastern shore of the Baltic Sea, and is the largest country in the Baltics population wise (2,98 million). Lithuania is bordered with Latvia to the north (588 km), Belarus to the southeast (660 km), Poland to the south (103 km) and the Russian enclave of Kaliningrad to the southwest (273 km). Lithuania's Baltic coastline is 90 kilometres long.

#### Lithuania's economy

- During the 1990s, Lithuania created a functional free-market economy, which has been a crucial pre-condition for economic growth.
- Being a part of the European Union and NATO offers investors guarantees of economic and political stability.
- Lithuania has been described as a country with the best road infrastructure in Eastern Europe.
- Lithuania has been a member of the euro-zone since January 1, 2015.
- Lithuania has three international airports – Vilnius, Kaunas and Palanga.

#### Membership of international organizations

- On September 17, 1991, Lithuania became a full-fledged member of the United Nations.
- On March 29, 2004, Lithuania became a member of NATO.
- On May 1, 2004, Lithuania became a member of the European Union.
- Lithuania is also a member of the World Trade Organization and the Schengen-zone.

#### Political system

- Since regaining independence in 1990, Lithuania has gone through rapid development, and witnessed broad social, economic and political change. It has become an independent, democratic and parliamentary republic.
- The state authority is carried out by parliament (*Seimas*), president, government and the court. The government's authority is restricted by the Constitution. The Lithuanian president is elected in direct elections by the people for a five-year term. The president oversees foreign and security policy. The Lithuanian parliament is made up of 141 members, and is elected to a four-year term. In order to be voted into parliament, parties must be over a 5% threshold.

#### History

- The current territory of Lithuania has been inhabited since 10 000 B.C. The Indo-European ethnic group – the Balts, began inhabiting the territory of Lithuania at about 700 B.C. The first known reference to Lithuania as a nation (*Litua*) comes from the annals of the Monastery of Quedlinburg and is dated March 9, 1009. Lithuania, located between Eastern and Western cultures, has experienced a dramatic struggle throughout history to remain an independent nation.
- In 1385, Lithuania and Poland signed the Union of Krewo, thus becoming a Catholic nation with strong religious traditions until this very day. Approximately 80% of believers in Lithuania are Catholics. During the reign of Grand Duke Vytautas (1392–1430), Lithuania became one of the largest nations in Europe, spanning from the Baltic to the Black Sea. The Kingdom of Lithuania was established in at the beginning of the 13th Century, when King Mindaugas was crowned King of Lithuania.

- On February 16, 1918, Lithuania proclaimed its independence, and was accepted into the League of Nations in 1921. Just like its Baltic neighbours, Lithuania was occupied by the Red Army in 1940 and later incorporated into the Soviet Union.
- On March 11, 1990, Lithuania announced the restoration of its independence.

#### Nature

- The Lithuanian landscape is made up of uplands and lowlands. The coastal area is made up of a narrow lowland area, which becomes the Žemaitija Highlands further inland. The eastern part of the country is rich with majestic lakes.
- In 1989, the French National Institute determined that an area just outside of Vilnius (24 km northwest) is actually the geographic centre of Europe.
- 57% of Lithuania's territory (65 300 square km) is made up of agricultural land, 30% is forests, 3% marshes, 4,5% internal waters, and 6% are other types of land.
- Lithuania has several areas of deep underground thermal and mineral waters, which are used for medicinal purposes. The country has a developed network of health resorts.

#### Culture and sports

- Every four years, Lithuania holds its Song and Dance Festival (*Dainų vėntė*), which gathers thousands of singers and dancers from all over the country. This festival has been included on UNESCO'S Intangible Cultural Heritage List.
- Lithuanians see Mikalojus Konstantinas Čiurlionas (1875–1911) as the country's greatest artist. He was both a painter and a composer. During his short life he composed about 250 pieces of music and created about 300 paintings. His works have had a profound influence on modern Lithuanian culture.
- Basketball is by far the most popular sport in Lithuania. Lithuania has produced many well-known basketball stars – Arvydas Sabonis, Šarūnas Jasikevičius and many more. At the moment, one of the world's rising swimming stars is Ruta Meilutytė, who won gold at just 15-years of age at Olympics in London in the 100 meter breaststroke.

#### GENERAL INFORMATION ABOUT LITHUANIA

<b>Official name:</b>	Republic of Lithuania
<b>Area:</b>	65,303 km <sup>2</sup>
<b>Population:</b>	2,88 million. 84% are ethnic Lithuanians. Second largest ethnic group are Poles, which make up 6,6% of the population.
<b>Capital:</b>	Vilnius (population – 542,600).
<b>Political system:</b>	Parliamentary republic, prime minister and Cabinet of Ministers hold highest executive power, while parliament ( <i>Seimas</i> ) holds legislative power.
<b>Currency:</b>	euro
<b>Language:</b>	Official language – Lithuanian
<b>National flag:</b>	Yellow-green-red
<b>Education:</b>	Primary, high school and higher education (primary and high school education state funded). Lithuania has 1 309 schools.
<b>Religion:</b>	Largest religious groups in Lithuania are Roman Catholics (80%), however, other religions are Orthodox, Lutherans, Old Believers, Muslims etc.
<b>Time zone:</b>	UTC+2
<b>Internet country code:</b>	.lt
<b>Cost of living:</b>	Vilnius is the 79th most expensive city in the world (Mercer Human Resource Consulting data for 2015)





Estonia is a country located in Northern Europe on the northeast corner of the Baltic Sea. With an abundance of islands and lakes, Estonia is the smallest of the three Baltic States, and one of the smallest countries in the European Union. Estonia is bordered with Russia to the east and Latvia to the south. It shares a sea border with Finland, and is located a short distance from Finland across the Gulf of Finland. Estonia's national symbols are its juniper forests, rocky coastline, the Estonian Song and Dance Festival, as well as Old Town Tallinn.

## Estonia's economy

- Estonia is a country known for its economic and political stability, accessibility, low business costs and investor equality.
- After joining the European Union and NATO in 2004, Estonia saw rapid economic growth. Estonia has suffered from the economic crisis, however, the downturn was cushioned by sensible governing, as the country had accumulated reserves.
- Business regulations in Estonia are much more liberal than in surrounding countries in the Northern European region.
- Estonia has low taxes, and the tax system is straightforward. Furthermore, costs are considerably lower than in neighbouring countries in Scandinavia.
- Estonia has one of the highest credit ratings in the region, according to *Fitch*, *Standard & Poor's* and *Moody's*.
- Estonia has been a member of the euro-zone since January 1, 2011.
- Estonia's main commercial industries are engineering, food production, the metal industry, chemical production and the manufacturing of products made out of wood (furniture, floors, doors, etc.).

## Membership in international organizations

- On September 17, 1991, Estonia became a full-fledged member of the United Nations.
- On March 29, 2004, Estonia became a member of NATO.
- On May 4, 2004, Estonia became a member of the European Union.
- On December 9, 2010, Estonia became a member of the Organization for Economic Cooperation and Development (OECD).
- On January 1, 2011, Estonia became a member of the euro-zone.

## Political system

- Estonia is a parliamentary democracy. The president is elected by parliament once every five years.
- The highest legislative power is the parliament (*Riigikogu*), which is made up of 101 members, who are elected to four-year terms. Parliament members are elected by proportional representation. The 13th Riigikogu elections took place in March, 2015.
- The Estonian government is made up of the prime minister, who is appointed by the president, and 14 Cabinet ministers. The government is confirmed by the president and the parliament.

## History

- Estonians are one of the Baltics' Finnic peoples, who are ethnically related to the Finns and the Sami. Historically and culturally, Estonians have always had a close connection with Scandinavia (especially Sweden

and Denmark), as well as Finland. The Estonian language belongs to the Finnic branch of the Uralic language family, and is similar to Finnish.

- Estonia became an independent country on February 24, 1918.
- In June of 1940, Estonia was occupied by the Red Army, and was later incorporated into the Soviet Union.
- Estonia declared the restoration of its independence on November 16, 1988, but was officially recognized as an independent country on August 20, 1991.
- Estonia's capital Tallinn is one of the best preserved Medieval cities in Europe, and the city's Old Town has been included on UNESCO's World Heritage list.

## Nature

- Estonia is one of the flattest countries in Europe, and also one of the lowest to sea level. A large part of the country's territory is made up of forests (50%) and marshes, or agricultural land.
- Approximately 10% of Estonia's territory is made up of islands, and 4,7 percent – lakes. The largest lakes are *Peipus* and *Võrtsjärv*.
- Estonia's natural resources include phosphate of lime, limestone, oil shale, sand and peat.

## Culture and sports

- Famous Estonians include writer Jaan Kross, whose works have been translated into 20 languages, the author of Estonia's national epic *Kalevipoeg* Friedrich Reinhold Kreutzwald, as well as writer, film producer and politician Lennart Meri.
- Estonia still celebrates its Song and Dance Festival traditions, which were established in the 19th century. The Estonian Song and Dance Festival has been included on UNESCO's Intangible Cultural Heritage List.
- Estonians have won many Olympic medals over the years. The country's most successful Olympian is cross-country skier Andrus Veerpalu, who has won two gold and one silver medal at the Olympics.

## GENERAL INFORMATION ABOUT ESTONIA

<b>Official name:</b>	Republic of Estonia ( <i>Eesti Vabariik</i> )
<b>Area:</b>	45,228 km <sup>2</sup>
<b>Population:</b>	1,31 million. 69,7% are ethnic Estonians. Second largest ethnic group are Russians, which make up 25,2% of the population, followed by Ukrainians, Belarussians, and Finns.
<b>Capital:</b>	Tallinn (population – 440,000, or 30% of the country's residents).
<b>Administrative division:</b>	Estonia has 15 regions, 33 cities and 194 counties
<b>Head of state:</b>	President (elected to a five-year term)
<b>Currency:</b>	euro
<b>Language:</b>	Official language – Estonian, however Russian is also widely used
<b>National flag:</b>	Blue-black-white; blue represents the sky, black represents the land, while white represents joy and happiness
<b>Education:</b>	Estonia has 540 primary and high schools throughout the country, as well as 36 higher education establishments
<b>Religion:</b>	Estonians are mostly Lutheran, however, other religions are also present – Orthodox, Baptists, Methodists and Catholics
<b>Mineral deposits:</b>	Estonia's natural resources include phosphate of lime, limestone, oil shale, sand and peat.
<b>Time zone:</b>	UTC+2
<b>International dialing code:</b>	+372
<b>Cost of living:</b>	Tallinn is the 88th most expensive city in the world (Mercer Human Resource Consulting data for 2015)

# Export has risen rapidly; the labour market might slow it down in the future

**In all of the Baltic countries, exports grew steeply during the past year. Basically, it can be explained by the growth in the main Baltic export markets, both in Europe and in the CIS. This year, growth will continue, but the previously achieved pace will be shaken. The reason for this is not so much in export markets, as in the Baltic States, where the tight situation in the labour market can become an impediment to rapid growth in the future.**

From the Baltic States, Lithuania stands on the first step of export honorary pedestal. Last year, it exported goods worth of 26.4 billion Euros – an increase by 16.9% since 2016. Estonia exported goods worth of 12.8 billion Euros last year, an increase by 8%. In its turn, the smallest amount of export in monetary terms in the Baltics last year was in Latvia. Our country has exported goods worth of 11.4 billion Euros, an increase by 10% than a year earlier.

## LOGICAL GROWTH

Export growth is not unusual if we look at the major markets of the Baltic States. The entire European Union, after the crisis, has been experiencing stable economic growth and rising consumption since 2010. According to the Eurostat statistics office, both the European Union and the eurozone's high gross domestic product (GDP) estimate show a 2.5% growth last year.

Russia has experienced economic recovery in recent years after the fall of its ruble rate as well. Last year, Russia was the first among the countries with the largest increase in export from the European Union, increasing by 19%.

Accordingly, Latvia's export to European countries grew by 9% to 9.8 billion Euros during the year. Main markets of Latvia have remained unchanged – Lithuania, Estonia and Russia. Last year, Russia also experienced the largest increase in export – by 31% to one billion Euros. The fall in the largest export partner countries was only in Poland, where goods shipped from Latvia dropped by 2% last year.

Main export markets have not changed in Lithuania and Estonia either. Lithuanian goods are mainly carried to Russia, Latvia and Germany. In turn, the main export market of Estonia last year was Finland, Sweden, Latvia and Russia.

## MECHANICAL ENGINEERING IS DEVELOPING

Latvia exports electric appliances, electrical equipment, machinery and mechanical appliances, lumber, pharmaceutical products, iron and steel products, as well as wheat and wheat and rye blend the most, according to the data by Central Statistical Bureau.

"Exports are growing thanks to both good export markets and export investments. As it is customary in our country, great and even too great importance is given to external conditions. The growth rates of exporting sectors have sharply differed. For example, wood processing grew by 2.1%, food processing by 4.3%, and machine engineering by more than

20%. Therefore, the situation in export markets was not likely to be a major factor. In the engineering industry, such growth was likely to be largely due to the fact that several foreign investors working in it gradually implemented their production expansion plans by transferring processes from affiliated companies elsewhere in the world. These decisions are not dependent on temporary fluctuations in the global economy," said Pēteris Strautiņš – an economist at the bank "Luminor".

In Estonia, as in previous years, electric appliances dominated the export, accounting for 17% of total exports. This was followed by wood and wood products as well as mineral products.

Last year, Lithuanian export was dominated by machinery and mechanical appliances, mineral products and chemical products.

## FUTURE FORECASTS

In 2018, export growth in the Baltic States will continue, as none of their major markets is facing an economic downturn.

"This year, a sharp increase in industrial output will continue. At the moment, it seems that the growth will decrease by 1-2 percentage points, but this could reflect a lack of awareness of corporate plans combined with caution rather than a real risk of growth breaks," said P. Strautiņš.

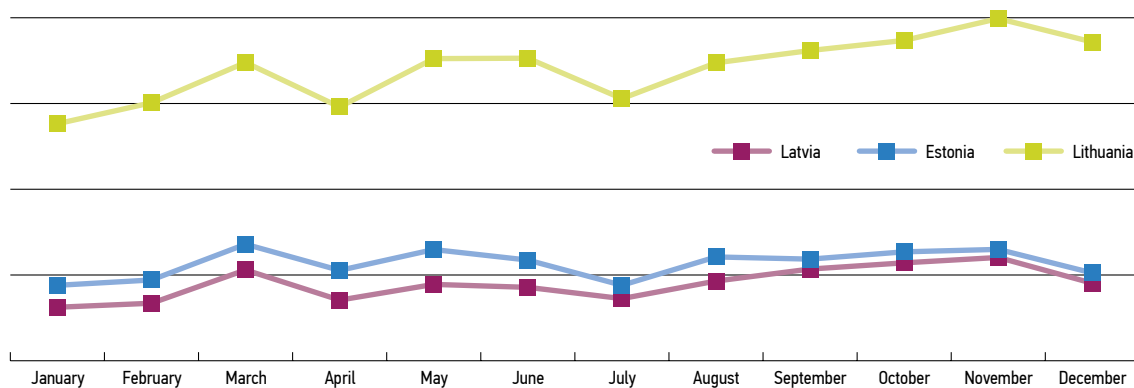
Therefore, the main obstacles for boosting exports in the Baltics can only be attributed to the inability of the exporters themselves to produce more. The main limiting factor will be the labour market.

"It is expected that growth in trade partner countries this year will be equal to last year's performance and the growth of external demand will be sustained, creating the preconditions for increasing our export capacity. However, the results of the last year will be difficult to achieve, given the high capacity pressures, wage growth and low investment in previous years. Only growing muscles of competitiveness to increase market shares will be the way to repeat and beat the high results of last year," commented Agnese Buceniece, an economist at "Swedbank".

At present, there are only a few industries and some groups of positions that do not have a pressure on wage increases, but most of the time there is a shortage of employees and wages are rising. Latvia is not lonely in this respect as the rapid increase in remuneration is observed both in neighbouring countries of Latvia and in many other so-called post-Soviet bloc countries, where the previous wages were lower than the average in Europe.

## EXPORT OF THE BALTIC STATES IN 2017 (million EUR)

Data: Baltic Statistical Bureau



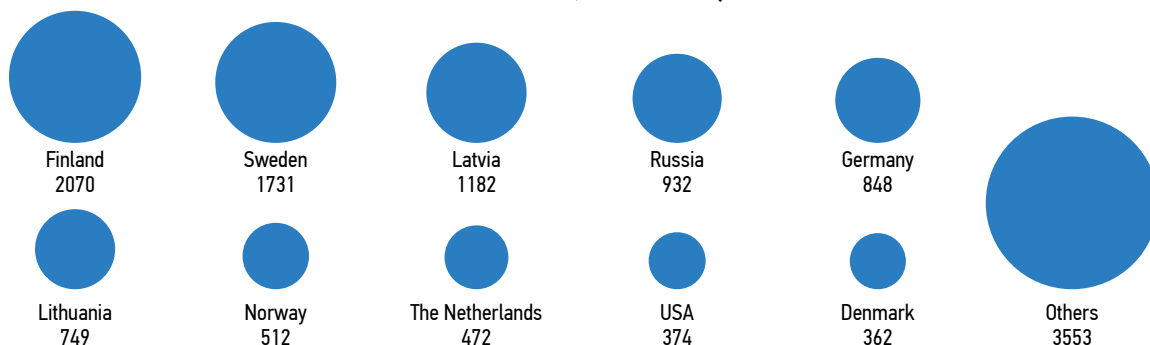
## MAJOR EXPORT MARKETS OF LATVIA IN 2017 (million EUR)

Data: Central Statistical Bureau



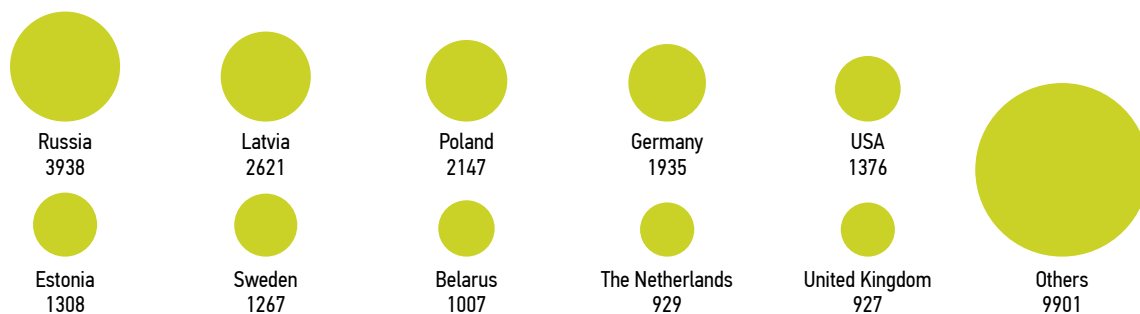
## MAJOR EXPORT MARKETS OF ESTONIA IN 2017 (million EUR)

Data: Estonian Statistical Bureau



## MAJOR EXPORT MARKETS OF LITHUANIA IN 2017 (million EUR)

Data: Lithuanian Statistical Bureau



# Export growth in Latvia could reach 10%

**2017 will certainly be the best in the last five years for Latvian exporters, and export growth in Latvia could reach as much as 10% in total. Export growth is not only rapid, but also very wide. Compared to 2016, almost all exports of goods manufactured in Latvia have increased, with the exception of grains whose harvest suffered from very adverse weather conditions in the summer.**

MĀRTIŅŠ ĀBOLIŅŠ, economist at the bank "Citadele"

The rapid growth of export in Latvia in 2017 is primarily due to the favourable development of the global economy. The world is expected to have the fastest growth since 2011, the sentiment of manufacturers in the European Union has reached the historically highest level, and the sentiment of US consumers has been the most positive in the last 17 years. In addition, favourable economic trends are also observed in China, Russia and other developing countries. As a result of these processes, trading volume in the world has increased by almost 10% this year, and it is not only the exporters of Latvia, but also Lithuania and Estonia. At the same time, positive export trends show that, while the labour market is getting warmer, Latvian entrepreneurs are generally competitive and able to take advantage of the opportunities offered by the global market.

This year has clearly shown that the export dynamics in Latvia depend on global economic trends to a large extent. In world trade, 2017 has been a very good year and it is rather believable that Latvia's export growth will be close to 10% this year. However, global trade is very volatile and previous years have been quite weak. Therefore, at present, we are likely to regain that was previously missed and in 2018 I would expect moderate growth in Latvia's exports in the range of 5-6%. This is already evident from the recent export dynamics in Lithuania and Estonia, where export growth has slowed down considerably.

## INVESTMENT IN THE CREATION OF LATVIA'S EXPORT AND INVESTMENT INFORMATION SYSTEM WILL BE EUR 500 000

The objectives of the project are to improve the awareness of potential and current exporters and investors about the topical issues of export and investment, increase the productivity of the Latvian Investment and Development Agency (LIAA) staff and improve customer service processes, and reduce the burden on exporters and investors in the process of obtaining information and in communication with LIAA. Within the framework of the project, it is planned to improve core business processes of LIAA – provision of advisory support, enhancement of the export capacity of Latvian entrepreneurs and promotion of foreign trade, potential and existing exporters, as well as providing consulting support to potential and existing investors for investment attraction.

## "SWEDBANK": IN 2018, EXPORTS WILL GROW SLOWER

In 2018, exports will grow slower, according to Agnese Buceniece, an economist at "Swedbank", reported in LETA. She explained that the global

economy continues to grow, which will increase external demand by creating opportunities for our exporters. "We have successfully used the opportunities in 2017. However, looking forward to the next year, such a strong increase will be difficult to sustain and exports will grow slower. The main reasons for this are high capacity load and lack of qualified workforce as well as base effects will no longer be so favourable. "To continue the growth of export, do not go without investment and productivity," said Buceniece.

## LTRK: 60% OF LATVIAN ENTREPRENEURS ARE CURRENTLY FACING LABOUR SHORTAGES

The shortage of labour force is becoming a topical issue in the Latvian economy, and now 60% of Latvian entrepreneurs are faced with a shortage of workers, said Aigars Rostovskis, President of the Latvian Chamber of Commerce and Industry (LTRK). He noted that the availability of labour is topical in all sectors. According to him, there is a shortage of all the qualifications of staff – both high and middle level, as well as low-skilled workers. He stressed that in order for exports to continue to grow and the economy to develop, the labour force problems require concrete action at the moment, otherwise growth will be inhibited.

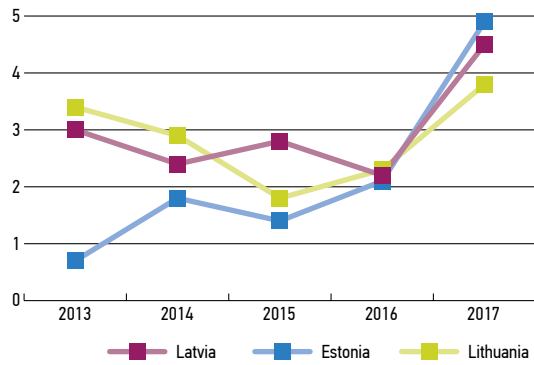
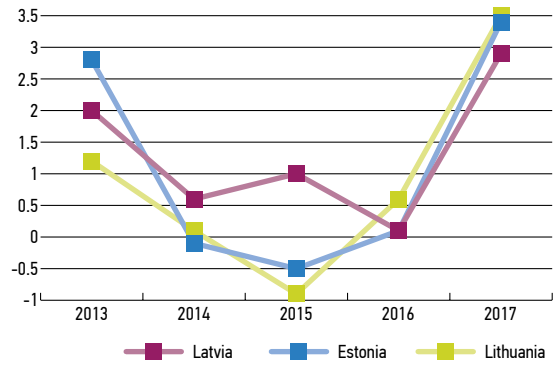
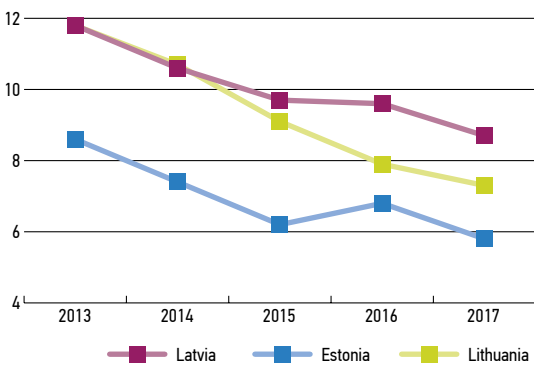
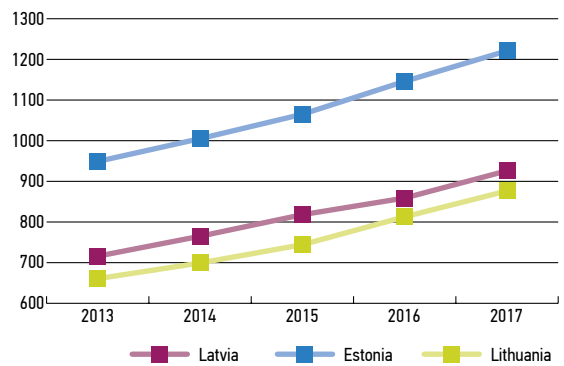
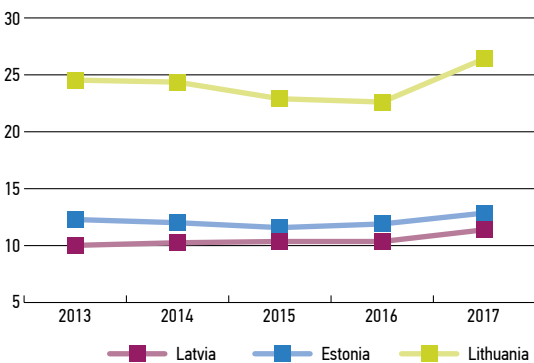
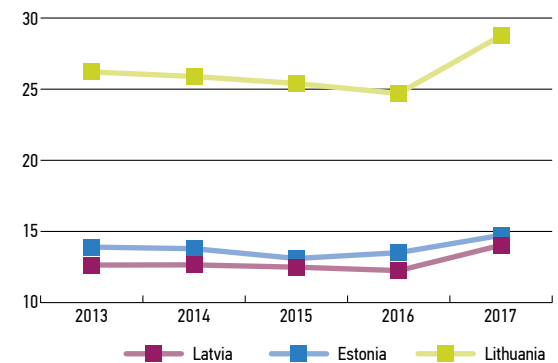
## INDUSTRY FAILURES

Nothing really has changed in terms of the European and Russian mutual sanction "war". In December, the Council of the European Union extended the sanctions imposed on certain Russian industries for six months, imposed on Moscow for its aggression in Ukraine. Accordingly, several Latvian export sectors have no hope of "opening" of the Russian market in the near future.

## INDUSTRY SUCCESSES

Latvian export companies are determined to acquire the Eastern market and thus obtain additional sales channels in parallel with the European Union and the unpredictable Russian market. Although the export volumes in the new markets are still small, much has been done to reach them at all. The Foreign Ministry, in its annual report, also points out that the activity of Latvian food producers in the Chinese market has considerably increased – 13 Latvian milk and 33 fishery companies have been certified for export to China. Thanks to the joint work of the Foreign Service and the Food and Veterinary Service, Latvian honey product certification process in China is in its' final phase.



**GDP (%) 2013-2017****INFLATION (%) 2013-2017****UNEMPLOYMENT (%) 2013-2017****AVERAGE GROSS WAGE (EUR) 2013-2017****EXPORT (billion EUR) 2013-2017****IMPORT (billion EUR) 2013-2017**

Data: Central Statistical Bureau, Estonian Statistical Bureau, Lithuanian Statistical Bureau

**FORECASTS**

	LATVIA		ESTONIA		LITHUANIA	
GDP (%)	3; 3.9; 4.1	3.2; 3.5; 3.7	3.5; 3.7	3	3.2; 3.5	2.5; 3
Inflation (%)	2.7; 3; 3.3	2.5	3; 3.2; 3.4	2.5	2.8; 3.3	2.5
Unemployment (%)	7.5; 7.6	6.8; 7.2	6.8; 7.5	7.2; 7.3	6.8; 7	6.5; 6.8
Average gross wage (%)	9	7	5.3	5.0	7.0	6.0
Export (%)	4.5	3.5	4.3	4.0	4.9	3.7
Import (%)	8	6	4.5	4.0	5.8	4.3

\* "Swedbank", SEB, "Luminor" forecasts

# Import grows and will grow faster than export. On foreign trade in 2017

**When writing about foreign trade, the most important thing is to focus on export. The logic is very simple – it's much more difficult to sell something abroad than to buy. In today's world, all solvent markets are saturated with competitors' offerings. The perception that there are still unreclaimed and, therefore, highly profitable markets, often fail to cope with reality. If the goods have been sold, and also the money for it has been received, then it is not difficult to buy what is needed abroad. Sometimes it is even very hard not to buy. Latvia is one of the politically stable and solvent markets in which everyone is happy to sell something.**

PĒTERIS STRAUTIŅŠ, economist at bank "Luminor"

However, export is just a tool, not an objective – it's an opportunity to get the money to pay for import. It can also be considered a necessary evil. Maybe we ourselves would like to eat all of the curd snacks "Kārumi" ("Dainty") produced in Latvia – the name suits them well. However, such a choice would be a waiver of the opportunity to receive money for these products, which allows going to the store and getting the last remaining chocolate curd snacks in Latvia not by foot, but by car.

The difference between export and import is decreasing, Latvian statisticians tend to say that the foreign trade balance has "improved", but this should not be taken literally; export is not an end in itself – there is more money, but less dainty. So there is no need to worry about the rise in import, even if it is faster than the increase in export, at least not at this time. If the trade deficit is rising rapidly due to the fact that import is financed by a rise in private or public debt, rising faster than savings, then this is a distress signal. However, the private sector is currently living with high financial surpluses, but the public sector deficit is insignificant.

Last year, import grew by 14.5%, while export rose by 10.0%; this difference is not alarming at the moment. It is very likely that in 2018 import of goods will grow faster than export, which is determined by the Latvian economic cycle. Import structure is very important. From the point of view of sustainable development, importation of capital goods is more important than import of cars. Last year there was a rapid increase in import by 18.3% in the category of capital goods – machinery and mechanical appliances. It is very gratifying that import of iron and steel are up by 25.1%. It is further processed in both directly exported steel products, installed in machinery and used for building construction in Latvia. There are signs that the increase in import of goods for investment accelerated by the end of the year.

Export is growing thanks to both good export markets and export investments. As it is customary in our country, great and even too great importance is given to external conditions. The growth rates of exporting sectors have sharply differed. For example, wood processing grew by 2.1%, food processing by 4.3%, and machine engineering by more than 20%. Therefore, the situation in export markets was not likely to be a major factor. In the engineering industry, such growth was likely to be due to the fact that several foreign investors working in it gradually implemented their production expansion plans by transferring processes from affiliated companies elsewhere in the world. These decisions are not dependent on temporary fluctuations in the world economy. No single manufacturer could easily be able to react so fast. Exports of mechanical engineering products would have grown very much if the growth of the global economy remained at the previous level.

In order to further increase export, most of the companies involved will need investment. The work of companies in expanding outlets and the cyclical upswing in the global economy have continued long enough to increase the producers' interest in investing in increased production capacity. There

is always the risk of meeting the newly increased production capacity and credit commitments made for this work at a time when the markets are already starting to fall. Business is always risky, but finding better time to invest would be difficult.

Growth in both Latvia and the main export market is strong and there are no signs of a possible sharp contraction in the next couple of years. Industry sentiment in the European Union was historically highest in December and January. Most of the sub-indices – the planned production in the near future, the total order portfolio, demand in export markets is historically the highest. The stock of finished products in turn is close to the minimum, but it is also optimistic news, no doubt. Product price expectations are above the historically average, but rather slightly, they are gradually increasing, thus the risks of overheating are moderate.

## EXPORT GROWTH COULD BE SLOWER THIS YEAR

Export growth was significant in the past year, and also the beginning of this year shows an increase in export. However, experts warn that restrictive factors are starting to play an increasingly important role, which means that the same growth as last year could not be achieved by Latvian exporters.

"Although the year has started with a high jump in export, it will unfortunately not be possible to keep such a high level throughout the year. Rising external demand will still help, considering the strong economic growth in our trading partner countries. However, the pace of growth will slow down, so demand for our goods will grow at a slower pace. It will also become increasingly difficult for exporters themselves to increase their volumes as the current level of investment in the economy will increasingly be subject to production capacity constraints and labour supply. Consequently, this year, overall, export is expected to grow slightly slower than last year," said Agnese Buceniece, an economist at Swedbank.

Protectionism will also play its part. This issue has been updated by the US Statement on Tariff Application for Steel and Aluminium Import. "Given that Latvia is a small open economy (exports account for about 60% of gross domestic product), the realization of these risks would have an adverse effect on our exporters and, consequently, on economic growth. It's not yet clear how other countries will respond to the US challenge and what could have an effect on the world's foreign trade, as well as Latvia's foreign trade," said Buceniece.

## THE ECONOMY OF THE EUROZONE WILL CONTINUE TO RISE

The main export market of Latvia is the countries of the eurozone – almost 50% of the total volume of exports of Latvian goods is exported there.

Experts predict good growth for the eurozone this year, which also gives hope to those Latvian exporters who are oriented to this market.

Experts from German, Italian and Swiss economic research institutes suggest that the economy of the eurozone will grow by 0.6% in both the first and second quarters, while GDP growth will slow down to 0.5% in the third quarter.

Economic activity will be driven mainly by investment, thanks to favourable financing conditions. Similarly, consumption expenditure will also be experiencing strong growth, which will be supported by the improvement of the situation in the labour market, experts say.

## THE IMPACT OF BANK FAILURES ON EXPORT IS STILL UNCLEAR

The decision of "ABLV Bank" to self-terminate, and forthcoming amendments to laws that will prevent Latvian banks from cooperating with a number of so-called shell companies, will not directly affect the main export sectors of Latvia.

However, this will affect the amount of Latvian financial export, which basically deals with so-called non-resident banks. "Export of financial services is not among the main export earnings items, but its' impact is not negligible. Accurate information about the past year is not yet known, but it accounted for about 2.5% of total exports of goods and services," says Pēteris Strautiņš, an economist at "Luminor", while noting that nobody can tell exactly what the impact of current events on financial services exports will be, but last year it dropped by 13% in nine months. According to Strautiņš, this fall will continue this year, and it is likely that the impact the impact will be measured in tens of percents.

Strautiņš also admits that these events may have a small effect on the household consumption in some way. "I am waiting for consumer sentiment data for March. It seems that the majority of the population is very well aware that they will not be affected by these events. The direct effect on employee income will be partially offset by the social budget. The state budget this year is generally created with a large reserve, it certainly will not need to be reviewed. For four years already, the unemployment rate in Riga is 5% or less, which in fact can be considered a full employment in Latvia. Other enterprises will have the opportunity to fill the vacancies, the impact on the unemployment rate in Riga will be small and temporary," he said.

At the same time, companies in the transit sector, whose management of shell companies is proving to be common practice, are ringing the alarm.

## THE EXPORT VALUE OF GOODS HAS DOUBLED SINCE 2007

The export of Latvian goods has increased by 10% in 2017, the export value of goods has doubled since 2007, said the Ministry of Finance (MF).

Assessing 2017 as a whole, MF concludes that the situation in international trade of goods has improved dramatically. Judging by the most recent economic forecasts from the European Commission, in 2017, for the first time since the global financial crisis, all EU Member States will have shown positive economic growth. In turn, the average growth of the EU economy in 2017 will have reached 2.4%, the fastest increase since 2008. Last year, the value of Latvian exports to the EU increased by 6.9%, and with the share of 71.4% in total exports, it was the largest market for Latvian goods.

"Total export of goods in 2017 increased by 10%, reaching 11.4 billion EUR, setting a record for the year, with the export value rising to the highest



Photo: shutterstock.com

level since the start of the statistical record-keeping. It should be noted that over the past decade, Latvian exporters have been able to increase the value of exported goods by double. In 2007 the total export value of goods was only 5.7 billion euros," MF acknowledged.

## "ZABBIX" AND "ERICASYNTHS" RECEIVE LCCI EXPORT AWARDS

Latvian Chamber of Commerce and Industry has awarded the Krišjānis Valdemārs prize "Latvji, brauciet jūrīnā!" to the information technology company "ZABBIX", and the "Sprīdītis" award – to innovative music company "EricaSynths".

In turn, honorary articles about the successful development of exports in the category "Latvji, brauciet jūrīnā!" were given to two companies – "RK Machinery", "Cannelle Bakery", and "Sprīdītis" award honorary articles were received by "MGS Factory" and "Snores".

The chairman of the LCCI Council Aigars Rostovskis stated at the general meeting of the LCCI that productivity and exports are the future of Latvia, therefore, every company that is looking for foreign partners and is able to realize the production, is essential for the Latvian economy, which is also evidenced by the contest that has become a tradition.

The Krišjānis Valdemārs prize "Latvji, brauciet jūrīnā!" is traditionally presented to a Latvian company with the largest export potential. In turn, the "Sprīdītis" award is presented to a young, innovative Latvian company with a strong export potential.



## BUSINESS BASICS:

- The economy of Latvia is a free market economy, it is regulated by appropriate laws, protecting commercial rights, trademarks and investments.
- The requirements of the European Union are included in laws of Latvia.
- In Latvia, there are no restrictions to or a different treatment of foreign investments and companies.
- A business and investment-friendly environment is one of Latvia's long-term economic priorities.
- The government has supported the Guidelines on National Industrial Policy 2014-2020, which have been worked out by the Economics Ministry and are intended to promote structural reforms in the economy in favor of production of more profitable goods and services, including increasing the role of industrial production, modernizing industrial production and services, as well as developing complex exports.
- In Latvia, business activity is mainly concentrated in the capital city Riga and its area, but various support mechanisms are being used to encourage business growth also in regions, for instance, by creating special economic zones, backing business incubators, the network of industrial clusters, etc. Latvia has a developed production and transport infrastructure – industrial parks, storage facilities, communications technologies, ports, railroad, as well as the largest air traffic hub in the Baltics.
- Altogether, 10,210 new companies were established in 2017 as compared to 11,206 new companies established in 2016. Like before, most of the new companies established in 2017, or 57.98%, were small capital limited liability companies.

# Number of companies drops in Latvia but ratings improve

## BUSINESS ENVIRONMENT ASSESSMENT

In the World Bank's Doing Business 2018 survey, covering 190 countries of the world, Latvia dropped to 19th position in 2018 from 14th position in 2017. Latvia earned the highest score in accessibility of loans, taking 12th place among the 190 countries.

- Cross-border trade is simple and has no impediments, the state takes 25th place in this aspect;
- Business start-up procedures in Latvia have become simpler in comparison with last year, in this aspect Latvia takes 20th place;
- In the efficiency of insolvency proceedings, Latvia's ranking is 53rd place;
- In recording real estate transactions Latvia has climbed to 22nd place;
- In investor protection, Latvia is at 43rd place;
- On the index of tax burden and simplicity of payments, Latvia has risen to 13th place;
- In Doing Business 2018, Latvia has risen to 21st place among the 190 countries in the world where it is easier to start a business.

## BUSINESS START-UP PROCEDURES:

- Number of procedures – 4.
- Time necessary to complete the procedures – 5.5 days.
- Minimum capital for a micro limited liability company – EUR 1.
- Minimum capital for a limited liability company – EUR 2,800.
- The Register of Enterprises is public.
- There are no restrictions on company owners' nationality.
- Company managers may apply for residence permits in Latvia.



## LATVIA'S INTERNATIONAL RATINGS:



- To date, agencies have assigned the following long-term foreign currency sovereign credit ratings on Latvia: Moody's Investors Service – 'A3', Outlook Stable, Standard & Poor's – 'A-', Outlook Positive, Fitch Ratings – 'A-', Outlook Stable and R&I – 'A-' Outlook Stable.
- 28th position in the Index of Economic Freedom 2018 (The Heritage Foundation).
- 54th place in the Global Competitiveness Report (World Economic Forum).
- 58 points out of 100 in the Corruption Perception Index (Transparency International).
- 19th place in the Doing Business 2018 (World Bank).

## PLACE IN DOING BUSINESS 2018

Ease of doing business rank (1-190)	19
Starting a business	21
Dealing with construction permits	49
Getting electricity	62
Registering property	22
Getting credit	12
Protecting minority investors	43
Paying taxes	13
Trading across borders	25
Resolving insolvency	53

Source: World Bank





Photo: shutterstock.com

Latvian registered companies by legal form	Number
Ltd.	264 169
Joint-stock companies	2 334
Farms	38 546
Individual companies	23 484
Co-ops	3 688
State owned enterprises	1153
Local government enterprises	1113

Source: Registry of Enterprises – April 2018

The Commercial Law requires disclosure of the true beneficial owners or owners of offshore companies owning Latvian companies. In accordance with the Commercial Law, a shareholder who holds equity capital shares or stock on his or her behalf, however, acquiring at least 25% of the capital company shares for the benefit of another person, has a duty to notify the capital company thereof within 14 days, indicating the person, for whose benefit such shares are held.

Business registration procedures are not expensive – they cost around EUR 170, which includes a EUR 142.29 stamp duty and EUR 27.03 to be paid for the publication of a notification in the official gazette Latvijas Vestnesis. Founders of limited liability companies must also be prepared to set aside EUR 2,800 for the company's capital. Since 2010, small capital limited liability companies can be registered even with a capital as small as EUR 1, but such enterprises have to meet certain requirements, for instance, they can have no more than five employees and their annual turnover must not exceed EUR 100,000.

## COMPANIES

In 2018, a total of 10,210 new entities were recorded in the Register of Enterprises, with small capital limited liability companies making up 57.98% of that number. Last year, the number of Latvia-registered companies declined by 996. The number of liquidated companies, meanwhile,

## USEFUL WEBSITES:

Latvian Investment and Development Agency.....	<a href="http://www.liaa.gov.lv">www.liaa.gov.lv</a>	
Ministry of Economics.....	<a href="http://www.em.gov.lv">www.em.gov.lv</a>	
Register of Enterprises.....	<a href="http://www.ur.gov.lv">www.ur.gov.lv</a>	
State Revenue Service.....	<a href="http://www.vid.gov.lv">www.vid.gov.lv</a>	
State Social Insurance Agency.....	<a href="http://www.vsaa.gov.lv">www.vsaa.gov.lv</a>	
State Labour Inspectorate.....	<a href="http://www.vdi.gov.lv">www.vdi.gov.lv</a>	
Financial and Capital Market Commission.....	<a href="http://www.fktk.lv">www.fktk.lv</a>	
Office of Citizenship and Migration Affairs.....	<a href="http://www.pmlp.gov.lv">www.pmlp.gov.lv</a>	
State Employment Service.....	<a href="http://www.nva.gov.lv">www.nva.gov.lv</a>	
Latvian Chamber of Commerce and Industry.....	<a href="http://www.ltrk.lv">www.ltrk.lv</a>	
Employers' Confederation of Latvia.....	<a href="http://www.lddk.lv">www.lddk.lv</a>	
Foreign Investors' Council in Latvia.....	<a href="http://www.ficil.lv">www.ficil.lv</a>	
Register of legal and contact information about Latvian companies.....	<a href="http://www.firmas.lv">www.firmas.lv</a>	

continued to rise, growing by 4,252 year-on-year to 16,479 in 2017. Most of the companies liquidated last year had been involved in retail trade, wholesale, construction of buildings and companies whose main activity is sale and repair of vehicles and motorcycles.

## GOVERNMENT INITIATIVES AND TASKS

In comparison with a large part of European countries, in Latvia a significant number of enterprises still belong to the state. These state-owned companies include the leading providers of infrastructure services in areas like energy, maintenance of railway infrastructure, freight transportation by rail and telecommunications.

# Largest companies in Latvia by industry

No.	Name	Field of activity	Net turnover in 2016, thous. EUR	Change in turnover by 2015, %	Profitability, %	Number of employees
<b>CONSTRUCTION</b>						
1	DEPO DIY, SIA	Building materials, sale	203 417	9.41%	6.01	1536
2	UPB, AS	Architecture, design	115 333	36.74%	5.28	538
3	JELD-WEN LATVIJA, SIA	Doors and windows	72 233	18.42%	1.82	518
4	Latvijas autoceļu uzturētājs, Valsts AS	Road construction, maintenance	64 483	4.15%	3.13	1343
5	Tirdzniecības nams "Kurši", SIA	Building materials, sale	64 372	1.47%	0.7	555
<b>ENERGETICS</b>						
1	Latvenergo, AS	Electricity production	513 563	-1.46%	26.76	1478
2	Circle K Latvia, SIA	Fuel and oil products, sale	368 163	2.79%	5.71	763
3	ORLEN Latvija, SIA	Fuel and oil products, wholesale	356 054	-22.55%	0.51	8
4	Latvijas Gāze, AS	Natural gas	343 792	-12.05%	11.75	1271
5	Sadales tīkls, AS	Electricity supply	315 697	8.01%	0	2554
<b>INFORMATION TECHNOLOGIES, COMPUTERS</b>						
1	ELKO GRUPA, AS	Computers, wholesale	381 963	3.79%	2.19	223
2	Mikrotīkls, SIA	Information technologies	223 285	10.32%	29.67	173
3	Ourea, SIA	Computers, wholesale	120 955	-1.86%	0.14	15
4	Evolution Latvia, SIA	Information technologies	58 283	53.59%	6.88	2285
5	ALSO Latvia, SIA	Computers, wholesale	56 207	-20.03%	0.25	67
<b>AGRICULTURE</b>						
1	URALCHEM Trading, SIA	Agrochemistry, fertilizers	778 395	-31.31%	1.26	37
2	LATRAPS, Lauksaimniecības pakalpojumu kooperatīvā sabiedrība	Agricultural services	228 799	40.22%	0.62	186
3	Baltic Agro, SIA	Agrochemistry, fertilizers	140 291	5.54%	2.1	135
4	Scandagra Latvia, SIA	Agrochemistry, fertilizers	77 836	3.07%	1.08	53
5	Pindstrup Latvia, SIA	Peat	58 429	10.20%	13.15	451
<b>MEDICINE AND PHARMACY</b>						
1	RECIPE PLUS, AS	Medicine, wholesale	171 287	14.41%	7.34	208
2	SENTOR FARM APTIEKAS, AS	Medicine, sale: pharmacies	124 114	20.18%	2.69	979
3	Tamro, SIA	Medicine, wholesale	101 970	10.09%	1.51	118
4	Rīgas Austrumu klīniskā universitātes slimnīca, SIA	Medical aid: in-patient	97 372	5.50%	-2.56	4413
5	Olainfarm, AS	Medicine, manufacture	91 096	7.49%	10.58	1070
<b>MEDIA, ADVERTISING, EDUCATION, CREATIVE INDUSTRIES</b>						
1	RUNWAY, SIA	Information services	20 274	20.81%	3.08	165
2	Latvijas Televīzija, SIA	Television	17 672	-0.01%	-0.04	487
3	TV 3 LATVIA, SIA	Television	16 969	-0.40%	18.23	170
4	BALTIJAS MEDIJU ALIANSE, SIA	Television	15 420	-1.81%	-1.39	10
5	4finance Media, SIA	Advertising and media agencies	13 853	157.44%	2.92	8
<b>THE FOREST INDUSTRY</b>						
1	Latvijas valsts meži, AS	Forestry and other activity	256 870	-1.79%	19.7	1267
2	LATVIJAS FINIERIS, AS	Woodworking	218 831	12.58%	4.96	1647
3	KRONOSPAN Rīga, SIA	Woodworking	176 796	14.27%	20.33	276
4	PATA, SIA	Forest exploitation	137 953	8.07%	1.38	118
5	Gaujas Koks, SIA	Woodworking	65 795	9.84%	3.4	489
<b>REAL ESTATE</b>						
1	Rīgas namu pārvaldnieks, SIA	Dwelling house managing	58 975	5.78%	0.86	2775
2	Valsts nekustamie īpašumi, Valsts AS	Real estate	49 981	-24.44%	-1.27	561
3	Plesko Real Estate, SIA	Real estate	28 429	6.46%	15.3	0
4	LIEPAJA BULK TERMINAL LTD, SIA LSEZ	Warehousing services	22 129	14.78%	6.86	266
5	Signāls-P-Šuja, SIA	Warehousing services	21 032	5	0.58	3

No.	Name	Field of activity	Net turnover in 2016, thous. EUR	Change in turnover by 2015, %	Profitability, %	Number of employees
<b>SERVICES</b>						
1	TOLMETS, SIA	Scrap metal	95 454	-34.30%	1.7	96
2	Clean R, SIA	Garbage evacuation, rent of containers	32 397	56.14%	5.2	1503
3	METALEKSPO, SIA	Scrap metal	21 283	1.29%	1.12	22
4	PET Baltija, AS	Secondary raw materials	18 420	0.87%	2.9	136
5	Cronimet Latvia, SIA	Scrap metal	15 346	-15.92%	0.78	7
<b>FINANCIAL, LEGAL AND BUSINESS SERVICES</b>						
1	4finance, AS	Financial activities	33 470	*	0	260
2	Circle K Business Centre, SIA	Accountancy services	23 132	36.20%	3.98	511
3	UniCredit Leasing, SIA	Leasing	18 212	-1.99%	31.42	99
4	Transact Pro, SIA	Financial activities	17 333	-11.97%	27.44	84
5	TAVEX, SIA	Financial activities	15 584	-7.37%	3.65	32
<b>FOOD AND BEVERAGE</b>						
1	Dobeles dzirnavnieks, AS	Food products: bread, grain mill products, manufacture	89 771	-8.87%	3.02	238
2	RĪGAS PIENA KOMBINĀTS, AS	Food products: milk processing	81 739	-9.25%	-0.71	680
3	Latvijas balzams, AS	Beverages: strong, production	75 720	2.61%	9.92	626
4	Cido Grupa, SIA	Beverages: soft drinks, production	58 319	8.54%	-1.05	338
5	Preiļu siers, AS	Food products: milk processing	57 752	-7.81%	2.04	311
<b>PRODUCTION</b>						
1	Uralkali Trading, SIA	Chemical reagents	1 795 371	-	0.72	30
2	Severstal Distribution, SIA	Metalworking	279 358	11.26%	2.81	259
3	VALMIERAS STIKLA ŠĶĪEDRA, AS	Fibreglass products	101 413	-1.79%	2.41	1085
4	LIVONIA PRINT, SIA	Printing services	53 351	9.24%	3.55	549
5	EAST METAL, SIA	Metalworking	49 110	53.72%	1.89	692
<b>TELECOMMUNICATIONS AND CONNECTIONS</b>						
1	Lattelecom, SIA	Telecommunications	162 165	-0.75%	19.53	1215
2	Latvijas Mobilais Telefons, SIA	Telecommunications	157 777	4.25%	15.4	532
3	Tele2, SIA	Telecommunications	111 224	7.26%	14.41	242
4	BITE Latvija, SIA	Telecommunications	78 971	17.42%	9.3	327
5	LMT Retail & Logistics, SIA	Communication equipment, sale	70 447	10.66%	3.52	364
<b>SALE</b>						
1	RIMI LATVIA, SIA	Food, sale	830 874	5.81%	3.86	5786
2	MAXIMA Latvija, SIA	Food, sale	693 792	0.72%	1.73	7686
3	Samsung Electronics Baltics, SIA	Household appliances and devices, wholesale	281 017	-3.60%	1.89	56
4	Sanitex, SIA	Domestic goods, wholesale	264 856	4.52%	0.24	344
5	Elagro Trade, SIA	Agricultural produce, purchase and supply	138 325	-7.16%	1.27	66
<b>TRANSPORT, LOGISTICS, TRANSPORTATION</b>						
1	LDZ CARGO, SIA	Freight transport: by rail	275 526	-17.19%	1.45	2724
2	Air Baltic Corporation, AS	Airlines, air transportation	249 576	6.01%	0.46	1002
3	Moller Baltic Import, SE	Motor vehicles, sale	215 571	11.30%	1.96	64
4	Latvijas dzelzceļš, Valsts AS	Railway transport	192 572	-11.58%	0.46	6808
5	Kreiss, SIA	Freight transport: by road	155 596	18.64%	2.37	2511
<b>TOURISM, HOSPITALITY, ENTERTAINMENT</b>						
1	ALFOR, SIA	Gambling arcades, casino	65 127	7.76%	22.32	925
2	Olympic Casino Latvia, SIA	Gambling arcades, casino	51 645	2.18%	36.26	751
3	LIDO, AS	Public catering	36 463	8.01%	0.63	996
4	JOKER LTD, SIA	Gambling arcades and casinos, equipment	33 034	10.06%	28.58	450
5	PREMIER RESTAURANTS LATVIA, SIA	Public catering	31 841	2.81%	3.57	727



# ERTE GRUPA

SIA



Private limited liability company ERTE Group is a pallet manufacturing and timber trading company located in Latvia. The company started to work in 2007 with pallet board and sawn timber trade, in 2009 began to produce pallets. ERTE Grupa SIA is now recognized as a reliable and loyal business partner for many local and international companies. Volume of more than 100 thousand m<sup>3</sup> of roundwood per year, pallets up to 600 thousand.

ERTE Grupa – латвийская компания, специализирующаяся на производстве и продаже поддонов и изделий из дерева. В 2007 году компания начала работу по торговле поддонами и пиломатериалами, в 2009 году она начала выпускать поддоны. ERTE Grupa теперь признана надежным и лояльным деловым партнером для многих местных и международных компаний. Объем более 100 тысяч м<sup>3</sup> кругляка в год, палитры до 600 тысяч.

Dobeles n., Gardene, Auru p., "Jaunkļavas", LV 3701  
T. +371 29 158811 [www.ertegrupa.lv](http://www.ertegrupa.lv)





Burtnieku n., Burtnieki  
Jāņa Vintēna 13, LV 4206  
Phone 29 231399, 29 886728  
janisjurass@inbox.lv  
www.horse.lv  
Working time - 24 hours

Companies main activity sphere is agriculture. The company's activity in 2014 was successful. Successful was cooperation with horse buyers in local market as well as with buyers from Russia, Belarus, Sweden, Finland, Estonia, Germany, Poland. In 2014 company focused on market research and attracting new buyers.

Главным направлением деятельности предприятия является сельское хозяйство. Работа предприятия в 2014 году была успешной. Успешным было сотрудничество с покупателями коней как на местном рынке, так и с покупателями из России, Белоруссии, Швеции, Финляндии, Эстонии, Германии, Польши. В 2014 году предприятие посвятило внимание исследованию рынка и привлечению новых покупателей.







## RESEARCH FARM

# Gundegas

Farm Gundegas offers to EU countries healthy dried berry, fruit products obtained using a number of new technological solutions.

The main product – big berry cranberries (*big cranberries – from Russian, High Spirit berries – from the American Indians*) are grown in previously fully explored (*US certified laboratory*) Laugas (*pools – in Liv language*) in Bīriņi marsh, in an area of 12 hectares, Research farm “Gundegas” (*founded in 1989, the first farm in Limbaži district, its owner and director – Doctor of Technical Sciences Andris Ansis Špats*).

All of our fruit processing and treatment processes comply with the “soft” processing process group – freezing, syrup extraction during osmosis process (20–30°C) and candied peel drying in a mild warm air flow (40–50°C).

Recycling process quality each can evaluate by himself, because the products well-preserve color, smell and taste – to the smallest nuance given by the nature. This shows that in candied peel antioxidant content compared with the berries will be increased by 2.2 times, while in glucose – fructose syrups will be approximately 1/2 of the berries antioxidant content.

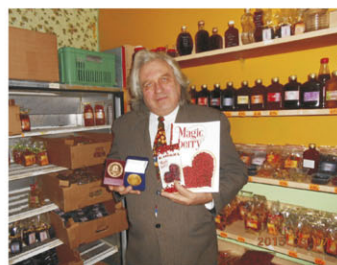
In February, in exhibition “Prodexpo – 2015” held Moscow, our product – dried round cranberries under brand “Magic Berry” – among 2000 participants from 65 countries were recognized with two “gold medals” in nominations: “Quality product” and “Innovative product”.

Limbaži d., Vidriži p., Bīriņi, “Gundegas”, LV 4013

Phone **26 128457, 640 22564**

E-mail: [andris@gundegas.lv](mailto:andris@gundegas.lv)

[www.spats.lv](http://www.spats.lv), [www.gundegas.lv](http://www.gundegas.lv), [www.naturegift.lv](http://www.naturegift.lv)





### A brief history of the new market products in Latvia

The only research farm (founded in 1989) owner in Latvia – Doctor of Technical Sciences Andris Ansis Špats already in 1991 offered to the Ministry of Agriculture, Ministry of Environment, Ministry of Education and Science to develop large cranberry cultivation in bankrupted peat plants in Latvia. None of the Ministries didn't fully supported this idea, perhaps, it was based on negative experiences in large plantations.



A. Špats as a scientist turned to VOCA (Volunteers in Overseas Cooperative Assistance) experts who worked in Latvia from 1 October 1991 to 30 September 1992 for consultative assistance. VOCA financed two expert missions to Latvia (2 x 4000 USD = 8000 USD), conclusion – this sector can progress but need more analysis that could be financed within the framework of US Department of Agriculture program "Ag-Link Baltia". A. Špats in 1992 turned to the US Department of Agriculture with a proposal – to explore large cranberry-growing opportunities in Latvia, because here are a lot of bankrupt peat plants and received a positive – supportive conclusion. From USA to Farm Gundegas were sent 7 working groups.

US expert in berry processing (Dusan R. Stanojevic, Vicepresident of Food Plant Engineering int., Inc.) analyzed the biggest fruit processing companies (1992) in Latvia and found:

1. Berry processing technology here has fallen behind, because there is no aroma capture and return, no juice concentration in a vacuum, no new berry fruit drying techniques, here is poor refrigeration equipment.
2. If cranberry cultivation would be developed in Latvia, then must be decided – whether to process all in one modern enterprise, or to build a number of small farmers refineries nearby the largest bog resources.
3. Should be introduced the latest juice concentration methods, berry drying methods.
4. Must be used already known recipes, but also must be created new products using the unique properties of cranberries – natural preservatives content and the ability to create new flavor compositions.

Soil full analysis were funded by OPIC fund (Overseas Private Investment Corporation), and they were done in 1994. The analysis showed low radiation background and complete purity of phosphorus and organic chlorine pesticides.

Was formulated World-level specialist cognition that in Latvia could grow big cranberries at least in the amount of US state of Wisconsin. US economic experts (J. Shwarc, Mag. Oec.) admitted that to this industry Latgale and state suburb marshes would give a strong impetus to development of the territory.

Dr. sc. ing. A. Špats based on the US offered economic, engineering science data and projects, developed the "Cranberry cultivation project" for Latvia's scale, reported in 1997 in "World cranberry developers conference" Wisconsin, Rapid City, 1997. October.

World Bank experts after acquainting with "Cranberry cultivation project" and Farm "Gundegas" experimental fields acknowledged (1997) that this sector has perspective in Latvia and WB contributed to the first long-term credit line at LIBOR rate (approx. 5 % / year). However, the Latvian Government changed their minds, and this credit line was renamed the "Rural development", which was transferred to "Parex" and other banks, which then gave it only in short term and took about 20 % per year ...

A significant effect was the developed planting material – 1t sent by US citizen Raimond Matisons in 1997, which the Ministry of Economy confirmed that gave at least VAT savings for farmers – enthusiasts and then the trials involved 13 farms.

Limbaži d., Vidriži p., Bīriņi, "Gundegas", LV 4013

Phone **26 128457, 640 22564**

E-mail: andris@gundegas.lv

**www.spats.lv, www.gundegas.lv, www.naturegift.lv**





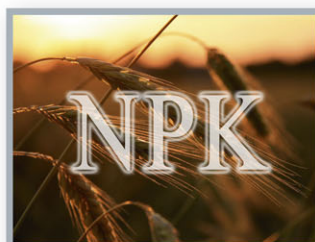
**Oil Logistic, Ltd**  
Riga, Bauskas 58A, LV 1004  
Phone 67 185750  
Fax 67 185760  
E-mail: [info@logistic.lv](mailto:info@logistic.lv)  
[www.logistic.lv](http://www.logistic.lv)

Oil Logistic Ltd. a company with 10-year work experience on markets of Latvia, Estonia and other European countries, offers for sale chemical and petrochemical products of Belarussian plants:

- **Fertilizers (UREA, ammonium sulphate, NPK) – in bulk or bags (50-1000 kg); CAS;**
- **Salt (technical, edible, feeding);**
- **Bitumen;**
- **Base oils;**
- **Polymeric materials (LDPE);**
- **Fiberglass;**
- **Paraffin and paraffin oils;**
- **Heavy pyrolysis resin;**
- **Diesel fuel.**

ООО «Ойл Логистик», компания с 10-летним опытом работы на рынках Латвии, Эстонии и других Европейских стран, предлагает к продаже химические и нефтехимические продукты, производства заводов Республики Беларусь:

- **удобрения (карбамид, сульфат аммония, NPK) – навалом или в упаковке (50-1000 кг); КАС;**
- **соль (техническая, кормовая, пищевая);**
- **битум;**
- **базовые масла;**
- **полимерные материалы (LDPE);**
- **стеклоткань;**
- **парафин и масляный отек;**
- **смола пиролизная;**
- **дизельное топливо.**





SABIEDRĪBA



**Bioefekts, Ltd**

Reg.No./Year:

40103110309 / 1993

Address:

Rīga, Nometņu 26, LV 1048

Phone:

+371 67 619157, +371 67 538499, +371 29 233947

E-mail:

info@bioefekts.lv

Internet:

www.bioefekts.lv

Nature of Business:

Ltd. Bioefekts already since 1993 develops and produces biological plant protection microbiological products for horticulture and agriculture needs. Our company's offered product scientific development is based on Professor Alfreds Kalnins (1895.- 1989.) and his student knowledge.







JSC "Latvijas valsts meži" (LVM) was established in October, 1999 in order to manage state-owned forests in Latvia. Company in 9 nurseries in market is able to offer more than 50 million forest trees - pine, spruce, birch, oak, black alder, fast growing aspen plants per year. Exported plant quantities are increasing each year and currently is 12 million per year. Ornamental plant offer is more than 600 different types.



Акционерное общество "Latvijas valsts meži" (LVM) было основано в октябре 1999 года с целью обслуживать государственные леса в Латвии. Предприятие на рынках 9 лесопитомников в год может предложить более чем 50 млн. саженцев деревьев - сосна, ель, берёза, дуб, ольха, быстрорастущая осина. Количество экспортированных саженцев каждый год увеличивается и на данный момент составляет 12 млн. в год. Предложение саженцев декоративных растений составляет более чем 600 видов.



**AS "LATVIJAS VALSTS MEŽI"**  
**LVM SĒKLAS UN STĀDI**

Madonas n., Kalsnavas p., Jaunkalsnava, Pārupes 4, LV 4860  
Phone: +371 648 26568, fax: +371 67 149036 • 8.30-17.00

[www.lvm.lv](http://www.lvm.lv)



**SIA "Pindstrup Latvia"** is a daughter company of a Danish company **Pindstrup Mosebrug A/S**, which was established in 1905 as a peat company for fuel peat production. In the last decades it developed to production of sphagnum peat moss growing media for professional growers and hobby gardening.



Since 1995 large part of customers are supplied from the Latvian production facility. Pindstrup Latvia operates in 6 peat extraction areas and has the most modern screening and packing lines of big bales and 300 l bags.

Sister companies of **Pindstrup Latvia** are located in Northern Ireland, Russia and Spain.

**Pindstrup Latvia's** products are sold to more than 70 countries all over the World.



**SIA PINDSTRUP LATVIA**  
Rīgas iela 30, Baloži  
Ķekavas novads  
LV 2128  
Latvia

Phone: + 371 67358500  
Fax: + 371 67358510  
E-mail:  
[pindstrup@pindstrup.lv](mailto:pindstrup@pindstrup.lv)  
[www.pindstrup.com](http://www.pindstrup.com)





# graanul invest

## Graanul Invest, Ltd

Reg.No./Year:

40003649423 / 2003

Address:

Smiltenes n., Launkalnes p., "Ezeriņi", LV 4718

Phone:

+371 647 73910

Fax:

+371 647 73913

E-mail:

[info@graanulinvest.com](mailto:info@graanulinvest.com)

Internet:

[www.graanulinvest.com](http://www.graanulinvest.com)

Contact person:

Haralds Vigants, Executive Director

Turnover:

35 000 000 / 2016 (EUR)

Nature of Business:

Purchase of chips, sawdust and timber.

Production of environment-friendly wood pellets.





# SIA "Ivonna"



**All types of catering services  
Mobile kitchen  
Delivery and dishes**

**Все виды услуг общественного питания  
Мобильная кухня  
Доставка и посуда**



Ādažu nov., Ādaži, Pirmā 26a, LV 2164

T. 29 326410, e-mail: [ivite@tvnet.lv](mailto:ivite@tvnet.lv)





**National costumes, folk costume production, sale, rental, arts and crafts. Woolen shawls, folk blouses, skirts, flower chaplets, folk vest, folk vests, folk men skirts, folk socks, folk belts, brooches. Linen children clothes.**

**Народные костюмы, изготовление, продажа, прокат народных костюмов, прикладное искусство. Наплечные покрывала, народные блузки, юбки, веночки, народный лиф, народные жилеты, народные мужские кафтаны, народные носки, народные пояса, сакты. Льяная детская одежда.**



### **Anvi AM**

**Rīga, E.Bīrznieka-Upīša 23, LV 1011**

**Phone/fax: +371 67 283194**

**Mob. phone: +371 29 419077**

**E-mail: [anviam@inbox.lv](mailto:anviam@inbox.lv)**

**[www.anviam.lv](http://www.anviam.lv)**





# EVA

Rīga, Gertrūdes 41-5, LV 1011

Phone: +371 67 310469

Fax: +371 67 373201

E-mail: [eva1992@inbox.lv](mailto:eva1992@inbox.lv)

[www.siaeva.lv](http://www.siaeva.lv)

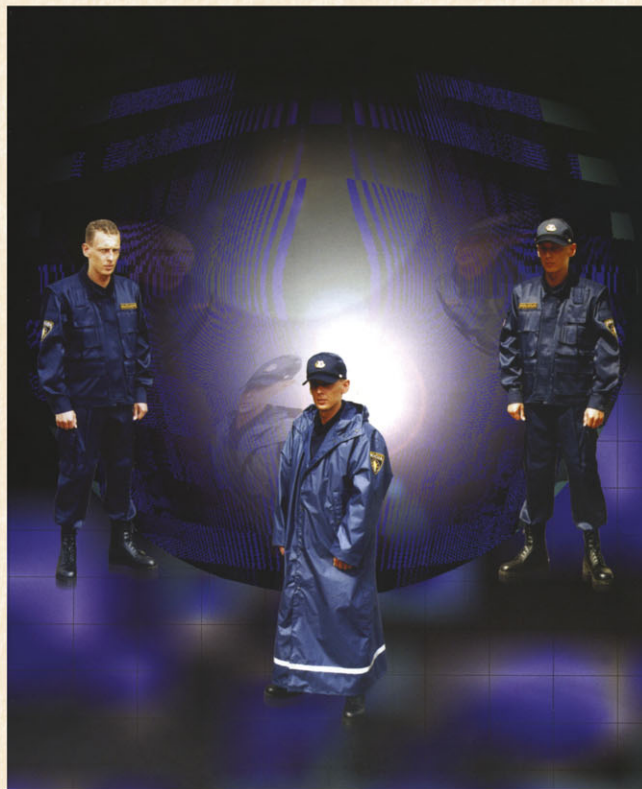
The company provides

qualitative sewing services:

- summer and winter jackets;
- semi-overalls and overalls;
- wool mixture and wool uniforms (jackets, outwear jackets, pants and skirts);
- shirts and blouses;
- ties;
- field uniforms;
- work clothing sets;
- hats - officer, side caps, berets, caps, winter and summer hats with a nail;
- shoulder-strap covers;
- reflective vests;
- policeman special uniforms.

Фирма качественно шьет:

- зимние и летние куртки;
- полукомбинезоны и комбинезоны;
- полушерстяную и шерстяную форменную одежду (пиджаки, куртки, брюки и юбки);
- рубашки и блузки;
- галстуки;
- одежду для сельских рабочих;
- комплекты рабочей одежды;
- офицерские головные уборы, пилотки, береты, кепки, зимние и летние
- уборы с козырьком;
- погоны;
- света отражающие жилеты;
- специальную форму для полицейских.







## **LITEX - RIGA Ltd**

### **SEWING COMPANY**

**Sewing company "Litex-Riga" is operating since 1992 and for today has proved itself as the first class manufacturer of ladies wear of high standard of quality. Company produces casual clothes from all types of fabric - from synthetic to natural; woven and knitted fabrics, from very light fabrics as chiffon, silk, taffeta, jersey and heavy fabrics as wool, cashmere, velour. Company produces coats, jackets, dresses, trousers, skirts, blouses, tops.**



**Швейная компания "Litex-Riga" основана в 1992 году и на сегодняшний день зарекомендовала себя как первоклассный производитель женской одежды высокого качества. Производится повседневная одежда из всех видов тканей - натуральных и синтетических; тканых и вязаных; легких, таких как шифон, шелк, парча, трикотаж; тяжелых, таких как шерсть, кашемир, велюр. Шьют: пальто, пиджаки, платья, брюки, юбки, блузки, топы.**

Rīga, A.Deglava 50, LV 1035  
Phone: +371 67 896920, +371 67 245225  
Fax: +371 67 248091  
[valentina\\_de\\_prendergast@apollo.lv](mailto:valentina_de_prendergast@apollo.lv)



The company was founded in 2003 year and it is specialized on the manufacture of waterproof clothing. Due to its design and construction, specially selected polymers for material production, our clothing provides perfect protection against water and wind. The material is also resistant to low temperatures.

Waterproof clothing and boots for fishermen (chest waders) production from high quality and durable material. New models can be designed by an individual customer request. All products are being tested on fishing vessels in the Baltic Sea in hard work conditions.

Фирма основана в 2003 году и специализируется на производстве влагозащитной одежды. Благодаря своей конструкции и специально подобранной смеси полимеров, входящих в состав материала, наша одежда обеспечивает идеальную защиту от влаги и ветра. Материал также устойчив к низким температурам. Производство водонепроницаемой одежды, рыбацких сапог и комбинезонов из высококачественного материала. Разработка моделей и их изготовление по индивидуальным заказам. Вся продукция тестируется на рыболовных судах в Балтийском море в тяжёлых условиях труда.



Liepāja, Baseina 14, LV 3401, tel. 26 779025, [proalifing@inbox.lv](mailto:proalifing@inbox.lv), [www.proalifing.lv](http://www.proalifing.lv)





# "EK Auce", SIA

## **EK Auce, Ltd**

Reg.No./Year:

40003290898 / 1996

Address:

Auces n., Auce, Miera 27, LV 3708

Phone:

+371 637 45232

E-mail:

[aija@ekauce.lv](mailto:aija@ekauce.lv)

Turnover:

2,5 mln / 2016 (EUR)

Employees:

220

Nature of Business:

Women's, men's and children's knitted clothing manufacturing, underwear and sports functional underwear manufacturing, waterproofing and special clothing and cows'udder holder production.





# ERTE GRUPA

SIA



Private limited liability company ERTE Group is a pallet manufacturing and timber trading company located in Latvia. The company started to work in 2007 with pallet board and sawn timber trade, in 2009 began to produce pallets. ERTE Grupa SIA is now recognized as a reliable and loyal business partner for many local and international companies. Volume of more than 100 thousand m<sup>3</sup> of roundwood per year, pallets up to 600 thousand.

ERTE Grupa – латвийская компания, специализирующаяся на производстве и продаже поддонов и изделий из дерева. В 2007 году компания начала работу по торговле поддонами и пиломатериалами, в 2009 году она начала выпускать поддоны. ERTE Grupa теперь признана надежным и лояльным деловым партнером для многих местных и международных компаний. Объем более 100 тысяч м<sup>3</sup> кругляка в год, палитры до 600 тысяч.

Dobeles n., Gardene, Auru p., "Jaunkļavas", LV 3701  
T. +371 29 158811 [www.ertegrupa.lv](http://www.ertegrupa.lv)





**Palleteries, Ltd.**

Kuldīga, Zaļā 6, LV 3301

Mob. phone: +371 29 534325

Mob. phone: +371 29 550365

Fax: +371 67 620455

E-mail: [info@palleteries.lv](mailto:info@palleteries.lv)

[www.palleteries.lv](http://www.palleteries.lv)



Palleteries, Ltd. main business is **production of packaging boards and pallet blanks**. As a very important additional direction is the direct purchase of products from sawmills and export of these products. The company provides local sawmills with orders and execution of the contract till the buyer.

All products are 100% exported to European Union countries (Germany, Holland, Belgium). Company has gained a good reputation in Latvian and European market as a stable and reliable partner with a very punctual performance of contracts.

Основная деятельность ООО Palleteries – это **производство паллетных досок и заготовок**. Как дополнительное и важное направление – это прямая закупка продукции от лесопилок и экспорт данной продукции. Предприятие обеспечивает выполнение заказов и договоров.

Вся продукция 100% экспортируется в страны Европейского союза (Германия, Голландия, Бельгия). Предприятие получило репутацию на рынке Латвии и Европы как стабильный и надежный партнер с пунктуальным выполнением договоров.







**Wood working,  
drying, planing,  
gluing, building  
materials  
Pellets for heating  
Wood chip bedding**

**Деревообработка,  
сушки, строгание,  
склейка,  
стройматериалы  
Гранулы  
для отопления  
Опилки для  
подстилки**



**Kocēnu n., Zilākalna p., Zilaiskalns, "Briede", LV 4222**  
**Phone +371 642 34130, +371 642 34044**  
**Mob. phone +371 29 237556**  
**Fax +371 642 22211**  
**E-mail: [silvikozagetava@inbox.lv](mailto:silvikozagetava@inbox.lv)**  
**[www.silviko.lv](http://www.silviko.lv)**







## TIMBER FRAME HOUSES

**We design** - apart from an extensive range in standard project catalogue also customized design service is provided to meet the desires, visions and resources of each particular customer.

**We manufacture** - the company experience accumulated over the years and the elaborate production technology allows to accomplish any panel technical solution without significant limitation.

**We build** - a wide range of construction services is offered, including delivery and assembly of our company manufactured timber frame constructions at construction site. Upon request the company can provide any kind of finishing works and services. „VIT BŪVE" Ltd. provides an option to acquire services that are necessary for each individual client and comply with their planned budget – from a prefabricated timber frame house kit to a finished home.



[www.vitbuve.lv](http://www.vitbuve.lv)



+371 67288161



[info@vitbuve.lv](mailto:info@vitbuve.lv)



### Ala Ligne, Ltd

Reg.No./Year:

40003733391 / 2005

Address:

Rīga, Jelgavas 88a-4, LV 1004

Phone:

+371 29 471167

E-mail:

andris@alaligne.lv

Internet:

www.alaligne.lv

Nature of Business:

ALA Ligne was founded on March 15, 2005. We started our activities with the export of lumber to the United Kingdom and Sweden. All sawmills were purchased from Latvian sawmills. In 2007, the company starts active production in its own sawmill (Lemberg's sawmill, Sidgunda, Malpils region). In 2016, 45 employees are employed. 20,000 m<sup>3</sup> of coniferous lumber is produced per year. Most of them are impregnated with high pressure autoclave with Thanalith E chemistry. ALA Ligne supports sustainable forestry policy and has obtained the FSC Certification for Wood Flow Control (FSC® C016285). We offer FSC 100%, FSC Mix Credit and FSC Controlled wood. We are reliable and reliable cooperation partners both in Latvia and abroad.



### Lamela, Ltd

Reg.No./Year:

40003406672 / 1998

Address:

"Īves", Rītausmas, Īslices pag., Bauska nov. LV-3901

Phone:

+371 639 25020

Fax:

+371 639 60558

E-mail:

info@lamela.lv

Internet:

www.lamela.lv

Turnover:

1 300 000 / 2016 (EUR)

Nature of Business:

Ltd "LAMELA" was founded in 1998.

The main activity of the company is the production of glued boards from ash and oak, as well as their sale in Latvia and abroad.

With the desire to be as close as possible to the buyer, a warehouse in Rīga was opened.







### LATVIA TIMBER INTERNATIONAL

#### Latvia Timber International, Ltd

Reg.No./Year:

40003057834 / 1992

Address:

Limbažu d., Limbaži, Meža 2, LV 4001

Phone:

+371 640 23041, +371 640 70180

Fax:

+371 640 23040

E-mail:

vn@latviatimber.lv, info@latviatimber.lv

Internet:

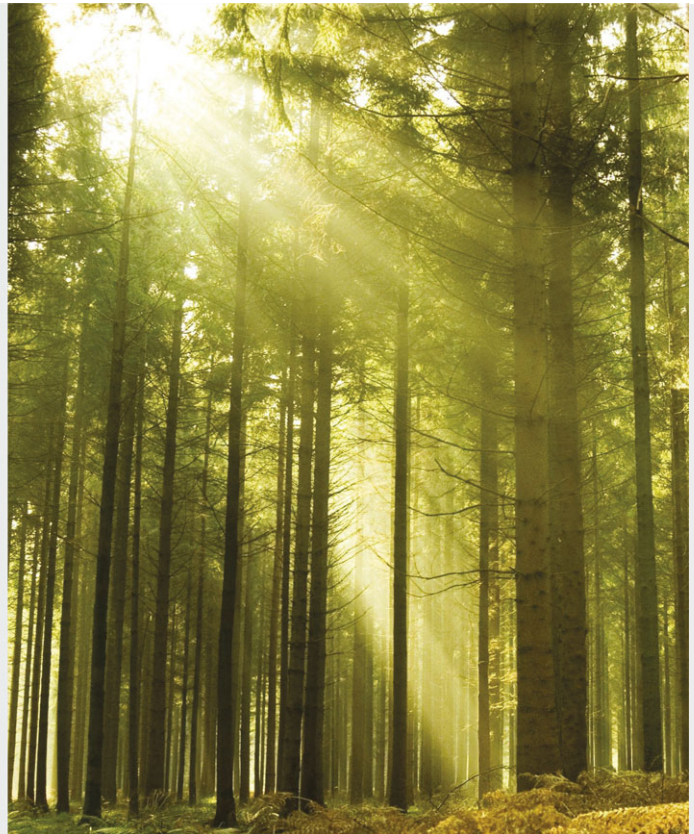
www.latviatimber.lv

Nature of Business:

LATVIA TIMBER INTERNATIONAL basic sphere of business is profiled and planed timber (pine and spruce) delivery and sale in European markets.

We purchase raw materials from our regular suppliers in Latvia, Estonia, Lithuania, Belarus and Russia.

We recycle wood into high quality profile products, which are designed for customers in European markets.



#### Latvian Union of Timber Quality Experts

Reg.No./Year:

40008006529 / 1994

Address:

Rīga, Dzērbenes 27-115, LV 1006

Phone:

+371 29 422052, +371 29 190524

Fax:

+371 67 555934

E-mail:

lkkес@lkkес.dtg.lv

Internet:

www.lkkес.lv

Certification office (LKKES SB)

LKKES SB is competent to perform certification according to LVS EN ISO/IEC 17024 standard requirements.

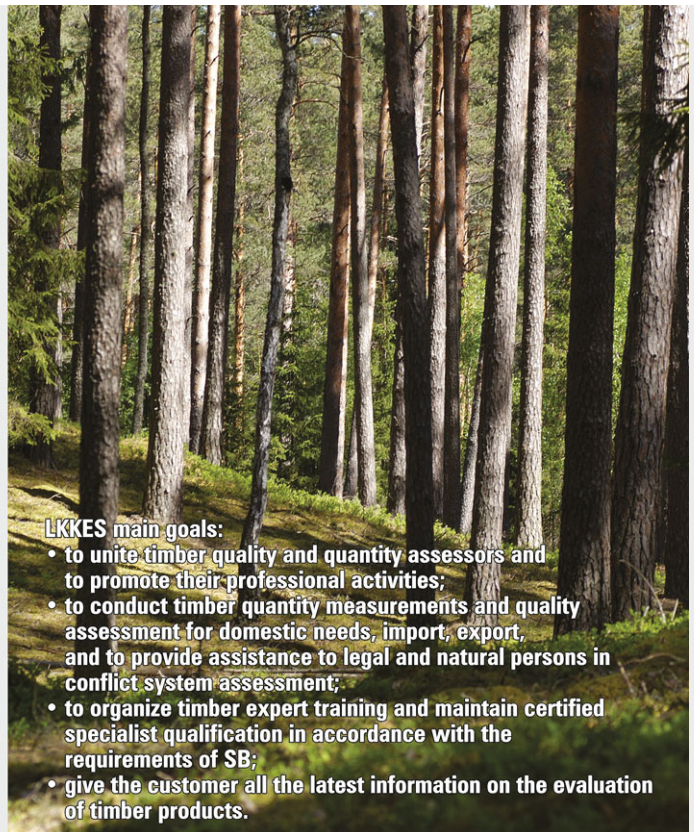
Director, mob. phone 26 549671

Testing laboratory (LKKES TL)

LKKES TL is competent to carry out testing according to LVS EN ISO/IEC 17025:2005 standard.

Head of Laboratory, mob. phone 26 134140

E-mail: kokutestlab@gmail.com



#### LKKES main goals:

- to unite timber quality and quantity assessors and to promote their professional activities;
- to conduct timber quantity measurements and quality assessment for domestic needs, import, export, and to provide assistance to legal and natural persons in conflict system assessment;
- to organize timber expert training and maintain certified specialist qualification in accordance with the requirements of SB;
- give the customer all the latest information on the evaluation of timber products.



## Manufacture of wood products, paper and their equipment



### Paladia, Ltd

Reg.No./Year:

40103684533 / 2013

Address:

Rīga, Jaunciema gatve 320, LV 1015

Phone:

+371 22 082555, +371 29 220276

E-mail:

igors@abazis.lv

Internet:

www.paladia.lv

Nature of Business:

Our main speciality is trainee the production of various wooden components with very wide range of size and complexity. To obtain a good results we develop special technologies and equipment. In 2016 our company has carried out the renovation of all CNC machines, so we also have the versatility to transition to different models in small batches.



### PL Logistics, Ltd

Reg.No./Year:

40103167685 / 2008

Address:

Rīga, Bajāru 22, LV 1039

Phone:

+371 26 584978, +371 27 114477

E-mail:

info@saplaksnis.lv

Internet:

www.saplaksnis.lv

Contact person:

Nauris Lilienfelds, Member of the Board

Nature of Business:

"PL Logistics" is a dynamic, multi-functional company that deals with board material (plywood, KSP, LKSP, OSB) sales, part manufacturing, furniture manufacturing, transport services in whole Europe.

# LOGISTICS



## Manufacture of chemical products, rubber and plastic products



### **Stafor, Ltd**

Reg.No./Year:

40103520315 / 2012

Address:

Rīga, Kuldīgas 53a, LV 1046

Phone/fax:

+371 67 603399

Mob. phone:

+371 29 219954, +371 26 408999

E-mail:

info@stafor.lv

Internet:

www.stafor.lv

Internet:

shop.stafor.lv

Nature of Business:

Company "STAFOR" was founded in 2012.

Main activity spheres: manufacturing of chemical and construction products; manufacturing of heating equipment (ion boilers) and climate control automatics.

In their activities the company emphasizes development and manufacturing of new products that are not in market yet.



### **Valmiera-Andren, Ltd**

Reg.No./Year:

40003160214

Address:

Valmiera, Cempu 23, LV 4201

Phone:

+371 642 21047

E-mail:

valmiera-andren@valm.lv

Internet:

www.val-and.lv

Nature of Business:

Fiberglass tanks, pipelines, gas treatment plants, underground and fire-fighting reservoir, other construction, production for corrosive liquids, drinking water, sewage.







**Elmeko, Ltd**

Reg.No./Year:

40003298641 / 1996

Address:

Rīga, Maskavas 144, LV 1003

Phone:

+371 29 245524, +371 26 465263

E-mail:

elmeko@latnet.lv

Internet:

www.elmeko.lv

Nature of Business:

Production of metal constructions to customer specification.



**Nākotne, Ltd**

Reg.No./Year:

50003019711 / 1991

Address:

Rīga, Lēdmanes 1, LV 1039

Phone:

+371 67 531901, +371 67 185344

Fax:

+371 67 547550

E-mail:

info@nakotne.lv

Internet:

www.nakotne.lv

Contact person:

Vladimirs Koklins, Chairman of the Board

Turnover:

1 140 000 / 2009 (EUR)

Nature of Business:

Industrial & Commercial company "Nākotne" is successfully operating and developing on the market already for more than 20 years. The company was established on the basis of tool production (manufacture of dies and moulds).

We have developed and introduced into production various consumer goods, of which some were granted the author's right. Trademark of our firm is well-known far beyond the country limits. We will be glad about mutual collaboration.



## Manufacture of basic metals, metal products and equipment



**SIASILJURĢIMET**

### Siljurgimet, Ltd

Reg.No./Year:

48503016008 / 2009

Address:

Saldus n., Saldus, Dzirnau 10, LV 3801

Phone:

+371 29 109016

E-mail:

siljurgi@inbox.lv

Internet:

www.siljurgimet.lv

Turnover:

200 000 / 2013 (EUR)

Contact person:

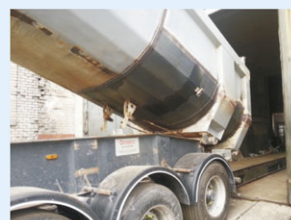
Māris Zvejnieks, Chairman of the Board

Employees:

7

Nature of Business:

The company specializes in stainless steel processing. Manufactures components and equipment for food industry, cafes, households, house construction, heating equipment, boats and yachts and equipment.



### SKH, Ltd

Reg.No./Year:

40103113004 / 1994

Address:

Rīga, Sāremas 3, LV 1005

Phone:

+371 67 381856, +371 29 212439

Fax:

+371 67 381855

E-mail:

skh@skh.lv

Internet:

www.skh.lv

Turnover:

5 500 000 EUR

Contact person:

Tatjana Gulko, Member of the Board

Nature of Business:

Manufacturing of reservoirs, tanks of steel cisterns, manufacture, assembling of metal constructions, tanks for petroleum products and other chemicals and liquids. Assembling of technological pipelines, equipment. Building works. Assembling of boilers, boiler equipment. External engineering networks. Water-pipes and sewerage systems. Heat supply.





### Valtanks, Ltd

Reg.No./Year:

44103013546 / 1998

Address:

Valmiera, Cempu 23, LV 4201, Latvija

Phone:

+371 642 21047, +371 29 240795

E-mail:

valtanks@valtanks.lv

Internet:

www.valtanks.lv

Nature of Business:

Manufacture of steel aboveground and underground single-walled and double walled storage tanks







**SATEMA BALTIC Ltd. is Satema JSC (Norway) branch in Latvia.**

**Our range of products includes construction site electrical equipment, mobile transformers, aluminum electrical enclosures, rosette blocks and other portable electrical installations. We also offer innovative and environmentally friendly Tower Light searchlight masts. We are a reliable supplier of mobile electrical equipment!**

**Quality, equipment functionality, skilled delivery and service are important elements which we fight for.**

**Contact us to carry out your next project.**

**OOO SATEMA BALTIC – Латвийский филиал норвежской фирмы Satema AS.**

**Наш ассортимент предлагаемой продукции включает в себя электрораспределительное оборудование строительных объектов, мобильные трансформаторы, алюминиевые корпуса электрораспределителей, блоки розеток и другое мобильное электрооборудование. Мы также предлагаем новаторские и дружелюбные окружающей среде мачты для прожекторов Tower Light. Являемся надежными поставщиками мобильного электрораспределительного оборудования.**

**Качество, функциональность оборудования, умелая доставка и обслуживание являются важнейшими элементами, за которых мы боремся.**

**Свяжитесь с нами, чтобы совершить свой следующий проект.**

Ogres n., Ogre  
Akmeņu 45, LV 5001  
Phone: +371 650 48616  
+371 29 251728  
Fax: +371 650 48617  
aigars.germanis@satema.lv  
www.satema.lv



**R.L.M., Ltd**

Reg.No./Year:

40003178339 / 1994

Address:

Rīga, Patversmes 8, LV 1005

Phone:

+371 26 555974

Fax:

+371 67 331989

E-mail:

[rlm@rlm.lv](mailto:rlm@rlm.lv)

Internet:

[www.rlm.lv](http://www.rlm.lv)

Nature of Business:

We produce car engine compartment shockproof protective guards, car accessories.

Production from composite materials for different sectors of economy.





## Custom Made Furniture Production

- ✓ Huge experience in furniture making
- ✓ Creative ideas of our designers
- ✓ Experienced craftsmen
- ✓ High quality materials and accessories

all this allows us to implement any of your ideas to life!



**We will make your dreams come true!**

SIA  
**UNIKA M**



118C Brivibas Str, Ogre, LV 5001, Latvia  
Phone (+371) 650 68292, (+371) 29 227244  
Fax (+371) 650 68292  
E-mail: [info@unika-m.lv](mailto:info@unika-m.lv), [www.unika-m.lv](http://www.unika-m.lv)







LATVIJAS - VĀCIJAS POLIGRĀFIJAS KOPUZŅĒMUMS

# HM Riga

LATVIAN - GERMAN PRINTING COMPANY

**HM Riga, Latvian Germany joint venture**

Reg.No./Year:

40003250113 / 1995

Address:

Riga, Mūkusalas 63-1.st., LV 1004

Phone:

+371 67 627779, +371 29 277202, +371 2525 3535

Fax:

+371 67 629571

E-mail:

nik@hmriga.lv, pasutijumi@hmriga.lv

Internet:

www.hmriga.lv

Nature of Business:

We supply the pharmaceutical and FMCG sectors in Latvia with folding carton solutions. Our special strengths are spot color printing and high quality finishing like embossing, Braille embossing, hot foil, spot varnishing and custom made holograms.





Stopiņu n., Rumbula  
Kaudzišu 57, LV 2121  
Phone: +371 67 317800  
Fax: +371 67 317810  
E-mail: [getlini@getlini.lv](mailto:getlini@getlini.lv)  
[www.getlini.lv](http://www.getlini.lv)

**“Getlini ECO” is a high-tech and environmentally friendly waste management company. We set an example in ecological renewable energy production, ecological farming and environmental management.**

**We will help you to become more ECO-logical!**

**Retail store  
(working hours 11:00-19:00)**

**“Getlini EKO” – высокотехнологичная и экологически чистая компания по обращению с отходами. Мы являемся лидерами в области производства возобновляемой экологической энергии, органического земледелия и управления окружающей средой.**

**Мы поможем вам стать ЭКО-логичными!**

**Розничный магазин  
(время работы 11:00-19:00)**







## TIMBER FRAME HOUSES

**We design** - apart from an extensive range in standard project catalogue also customized design service is provided to meet the desires, visions and resources of each particular customer.

**We manufacture** - the company experience accumulated over the years and the elaborate production technology allows to accomplish any panel technical solution without significant limitation.

**We build** - a wide range of construction services is offered, including delivery and assembly of our company manufactured timber frame constructions at construction site. Upon request the company can provide any kind of finishing works and services. „VIT BŪVE” Ltd. provides an option to acquire services that are necessary for each individual client and comply with their planned budget – from a prefabricated timber frame house kit to a finished home.



[www.vitbuve.lv](http://www.vitbuve.lv)



+371 67288161



[info@vitbuve.lv](mailto:info@vitbuve.lv)

## Building and civil engineering



### ADC, Ltd

Reg.No./Year:

40103270421 / 2010

Address:

Mārupes n., Mārupe, Dzirnietu 16, LV 2167

Phone:

+371 29 226303, +371 29 215218

E-mail:

adc@inbox.lv

Internet:

www.akmensdizainacentrs.lv

Nature of Business:

Company ADC Ltd works in the stone processing industry since 1996 and employs craftsman of special competence, skills and work experience. Over the years gathered knowledge and experience allows us to produce wide range of products from stylish simplicity to exquisite luxury: kitchen and bathroom worktops, floors and walls, stairs and windowsills.



### Būvbalsts, Ltd

Reg.No./Year:

40103531183 / 2012

Address:

Rīga, Rencēnu 10a, LV 1073

Phone:

+371 66 065480, +371 26 652125

E-mail:

info@buvbalsts.lv

Internet:

www.buvbalsts.lv

Nature of Business:

Main activities of Ltd Būvbalsts: construction of public, industrial and civil buildings, construction supervision. Engineering, water supply, sewerage, heat supply and ventilation work, management and construction supervision.







## Nielatec Baltija, Ltd

Reg.No./Year:

44103040440 / 2006

Address:

Smiltene n., Smiltene, Mētras 11, LV 4729

Phone:

+371 29 481231

E-mail:

nielatec@inbox.lv

Internet:

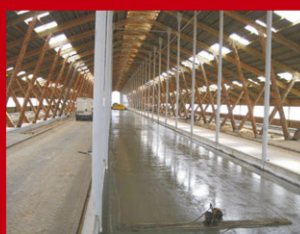
www.nielatec.lv

Contact person:

Reinis Bāliņš (Chairman of the Board)

Nature of Business:

"Nielatec Baltija" Ltd is a construction company that conducts casting of industrial and decorative epoxy floor coverings and casting, shot-blasting and polishing of industrial concrete floors.



## Stafor, Ltd

Reg.No./Year:

40103520315 / 2012

Address:

Rīga, Kuldīgas 53a, LV 1046

Phone/fax:

+371 67 603399

Mob. phone:

+371 29 219954, +371 26 408999

E-mail:

info@stafor.lv

Internet:

www.stafor.lv

Internet:

shop.stafor.lv

Nature of Business:

Company "STAFOR" was founded in 2012.

Main activity spheres: manufacturing of chemical and construction products; manufacturing of heating equipment (ion boilers) and climate control automatics.

In their activities the company emphasizes development and manufacturing of new products that are not in market yet.





# LOGISTICS

"PL Logistics" is a dynamic, multi-functional company that deals with board material (plywood, KSP, LKSP, OSB) sales, part manufacturing, furniture manufacturing, transport services in whole Europe.

„PL Logistics" это динамичное, многофункциональное предприятие, которое занимается торговлей листовых материалов (клееная фанера, KSP, LKSP, OSB), изготовлением деталей, изготовлением мебели, транспортными услугами по всей Европе.

Rīga, Bajāru 22, LV 1039, phone +371 26 584978, +371 27 114477  
E-mail: [info@saplaksnis.lv](mailto:info@saplaksnis.lv), [www.saplaksnis.lv](http://www.saplaksnis.lv)







### **Sporta halle, Ltd**

Reg.No./Year:

40003332710 / 1997

Address:

Rīga, Vietalvas 1, LV 1009

Phone:

+371 67 040731, +371 29 276993

Fax:

+371 67 040732

E-mail:

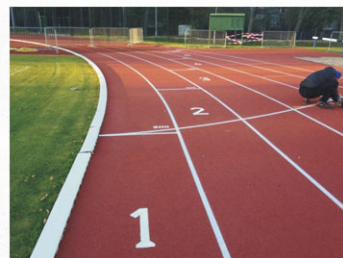
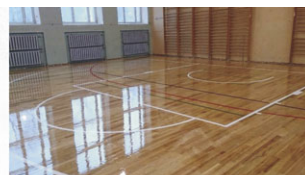
kristine@sportahalle.lv

Internet:

www.sportahalle.lv

Nature of Business:

Wholesale of sports and camping goods.





### Transit Service Agency Ltd

Liepāja, Brīvības 123, LV 3401

Phone 634 86362, 634 86363, fax 634 86316

E-mail: [railway@tws.lv](mailto:railway@tws.lv)

[www.lbt-port.com](http://www.lbt-port.com)

Company "Transit Service Agency" Ltd is the main expeditor of stevedoring company LSEZ Ltd "Liepāja Bulk Terminal Ltd".

Company "Transit Service Agency" Ltd is one of the largest cargo expeditors in Liepāja port, that works in the market since 2000 and can offer you optimal cargo transportation schemes.

Our cooperation with big cargo expeditors, as well as brokers – shows that Liepāja port, taken into account its geographical location and availability of huge storehouses, is the most comfortable port in the seacoast of the Baltics.

Direct contracts with Latvian and CIS railway companies, as well as with main Russian expeditors (rolling stock proprietors), allow to decrease costs for transportation of goods by land, but contacts with shipping agencies allow to obtain favourable tariffs for transportation to any port in the world.

Covered storehouses by our company groups in the port and port area, with total area more than 250 000 sq.m., are able to take on simultaneously various cargos up to 120 000 t (more than 15 kinds), that in their turn allow us to offer storage for shipment parties of various size from 1000 t up to 30 000 t and consignment of ship, railway and road cargos from our storehouses to any place in the world.

We perform all required cargo operations and railway expeditions in Latvia and CIS countries, up to the receiver.

Cargo quality control and custom formalities are performed in our terminal on the site. In addition to storage, pre-packing, shipment, and transportation services, we, by applying our large experience, are able to suggest trading schemes through Latvian and European banks, using FIATA.

Компания "Transit Service Agency" ООО является генеральным экспедитором стивидорной компании LSEZ ООО "Liepāja Bulk Terminal Ltd".

Компания "Transit Service Agency" ООО одна из крупнейших экспедиторов в порту Лиепая, которая работает на рынке с 2000 года и сможет предложить Вам оптимальные схемы транспортировки грузов.

Наше сотрудничество с рядом крупных экспедиторов, а также с брокерами показало, что порт Лиепая в силу своего географического положения и наличия больших складских мощностей является наиболее удобным на Балтийском побережье.

Наличие прямых договоров с железными дорогами Латвии и стран СНГ, а также с крупными экспедиторами России (владельцами подвижного состава) позволят уменьшить расходы по транспортировке грузов на суше, а контакты с судоходными компаниями дают возможность получить выгодные фрахтовые ставки до любого порта мира.

Крытые склады группы наших компаний в порту и припортовой зоне общей площадью более 250 000 м<sup>2</sup> способны принимать одновременно 120 000 тн различных видов грузов (более 15 наименований) для накопления различных судовых партий от 1000 тн до 30 000 тн, осуществлять судовые, повагонные и трейлерные отправки с наших складов в любую точку Мира.

Мы осуществляем все необходимые грузовые операции и железнодорожную экспедицию по территории Латвии, стран СНГ до получателя.

Определение качества груза и таможенные формальности происходят непосредственно в нашем терминале.

Кроме складирования, фасовки, экспедиции и транспортировки мы сможем предложить схему продаж через Латвийские и Европейские банки, используя FIATA в чем тоже имеем большой опыт.





## Rīgas starptautiskā autoosta, JSC

Reg.No./Year:

40003361404 / 1997

Address:

Rīga, Prāgas 1, LV 1050

Phone:

+371 900 00009, +371 900 01111

Fax:

+371 67 507009

E-mail:

autoosta@autoosta.lv

info@autoosta.lv

palīdzība@autoosta.lv - application for assistance  
for disabled persons

Internet:

www.autoosta.lv

Nature of Business:

Tickets to domestic and international routes:

www.bezrindas.lv

www.buseurope.eu

Information on European route networks [www.eurobuses.org](http://www.eurobuses.org)





We guarantee the highest quality transport and expedition services for all types of containers, non-standard dimensions and general cargos that we deliver to a destination by rail, land or sea transport.

- LOGISTICS
- CUSTOMS BROKER
- PORT SERVICE

- Charter prices (direct contracts with carrier)
- Route development
- Container transport worldwide
- Car shipments
- Railway shipments
- Cargo strengthening
- Port, stevedoring and warehouse services
- Timber cargo processing (drying, planing, impregnation) at Riga Port
- Project (Non-standard dimension) cargo expedition and transport
- Delivery from the sender's door to the beneficiary's door
- Customs broker services
- Cargo delivery in all directions in the CIS, Europe, the UK, Scandinavia, the U.S.A., and Canada
- Cargo insurance



Birztalu str. 9, Riga, LV 1015, Latvia  
Phone +371 67887203  
Fax +371 67887204  
E-mail: [info@jaunzeltini.lv](mailto:info@jaunzeltini.lv)







# RIGA CATHEDRAL

Phone 67 227573  
Mob. phone 29 499097  
Cash register 67 213213  
Fax 67 227573  
E-mail: doms@doms.lv  
www.doms.lv  
www.doms800.lv

Riga Cathedral is the largest and one of the oldest sacral buildings in Latvia and Baltic region from the medieval period. Cathedral ensemble foundation stone was laid On July 25, 1211. The Riga Cathedral combines Romanesque, early Gothic, Baroque and Art Nouveau features. Historically, the Riga Cathedral was the Livonian Order Cathedral. Today Cathedral serves to Latvian Lutheran Church and is the main Latvian ecumenical worship place, as well as one of Riga's musical life centers.

Riga Cathedral organ belongs to the most valuable historic organs in the world. It represents top quality both in its technical and artistic performance and rightly belongs to the highest organ building achievements dating to the period of late Romanticism. Particularly successfully instrument features combines with the Riga Cathedral excellent acoustics, creating a uniquely beautiful sound. It touches and thrills all the listeners and keeps inviting to Riga music lovers from all over the world.



IEGULDĪJUMS TAVĀ NĀKOTNĒ



## WORSHIP SERVICES

12:00 on Sundays, 8:00 and 18:00 on Thursdays and 8:00 on the rest of the days.  
A special worship service for families with children on the first Sunday of the month at 17:00.

## RIGA CATHEDRAL IS OPEN FOR VIEWING

From May 1 to September 30: every day from. 9:00-18:00, on Wednesdays and Fridays until 17:00  
From October 1 to April 30: every day from 10:00-17:00  
Prayer chapel open for free in the above-mentioned working hours.

## ORGAN MUSIC PERFORMANCES

From May 1 to September 30 from Monday to Saturday at 12:00  
From October 1 to April 30 on Wednesdays and Saturdays at 12:00

## CONCERTS

May and September: on Wednesdays and Fridays at 19:00; From October 1 to April 30 on Fridays at 19:00  
From June 1 to August 31 on Wednesdays, Fridays and Sundays at 19:00  
Additional concerts are held almost every week.  
Tickets can be purchased at the Cathedral box office.  
Information [www.doms.lv/koncerti](http://www.doms.lv/koncerti)

Riga Cathedral restoration is conducted within the framework of European Regional Development Fund activities of project "Support to Private Owners of Cultural Monuments in Monument Preservation and in the Effective Use of Their Socio-economic Potential".



## Art, entertainment, hospitality and catering



### M Lite Group MK, Ltd

Reg.No./Year:

40103399076 / 2011

Address:

Rīga, Baltā 1b, LV 1055

Phone:

+371 67 463055

Fax:

+371 67 463056

E-mail:

info@m-lite.lv

Internet:

www.m-lite.lv

Employees:

12

Nature of Business:

Event technical support - sound and light equipment, technical support, visual design, equipment rental and trade.



### Vlissa, Tourism company

Reg.No./Year:

40003081770 / 1992

Address:

Rīga, Turģeneva 16, LV 1050

Phone:

+371 67 226637, +371 67 686332, +371 67 233322

Phone:

+371 67 503799, +371 67 503796

Fax:

+371 67 686332, +371 67 233322

E-mail:

vlissa@vlissa.lv

Internet:

www.vlissa.lv

Contact person:

Ivans Bartušs, Member of the Board

Employees:

5

Nature of Business:

Forming visas to Russia Belorussia Thailand China etc.

Leisure tours to Turkey, Thailand Canaries, Greece,

Coratia, Bulgaria, Spain Egypt etc.

Air tickets, travel insurance, OCTA Green card.







# INTELLIGENCE SERVICES

## LICENSED DETECTIVE AGENCY

*Licence No. 1638*

- Detective services
- Business security
- Security consultations
- Intellectual property protection
- Legal advice

## ЛИЦЕНЗИРОВАННОЕ ДЕТЕКТИВНОЕ АГЕНТСТВО

*№ лицензии 1638*

- Услуги детективов
- Безопасность бизнеса
- Консультации по безопасности
- Защита интеллектуального имущества
- Юридические консультации



Rīga, Maskavas 162, LV 1003  
Phone +371 26 112939  
[info@abintelligenceservices.com](mailto:info@abintelligenceservices.com)  
[www.intelligenceservices.lv](http://www.intelligenceservices.lv)





*Primus inter pares...*

Rīga, Jeruzalemes iela 2/4, 2. st.,  
LV 1010

Phone: (+371) 67321010  
(+371) 67324606

www.amoko.com  
E-mail: info@amoko.com

- Resident and nonresident enterprise registration
  - Legal and accounting services for enterprises
  - Mediation in bank account opening
  - Real estate rental, rent, building management
- 
- Регистрация латвийских и нерезидентных компаний
  - Юридическое и бухгалтерское обслуживание предприятий
  - Открытие банковских счетов
  - Аренда недвижимого имущества, хозяйственное обслуживание домов
  - Полная консультационная и иная квалифицированная поддержка в получении временного вида на жительство в Латвии





## INTELLIGENCE SERVICES

### LICENSED DETECTIVE AGENCY

*Licence No. 1638*

- Detective services
- Business security
- Security consultations
- Intellectual property protection
- Legal advice

### ЛИЦЕНЗИРОВАННОЕ ДЕТЕКТИВНОЕ АГЕНТСТВО

*№ лицензии 1638*

- Услуги детективов
- Безопасность бизнеса
- Консультации по безопасности
- Защита интеллектуального имущества
- Юридические консультации



Rīga, Maskavas 162, LV 1003  
Phone +371 26 112939  
[info@abintelligenceservices.com](mailto:info@abintelligenceservices.com)  
[www.intelligenceservices.lv](http://www.intelligenceservices.lv)



### **JK Consulting Group, Ltd**

Reg.No./Year:

40103699346 / 2013

Address:

Rīga, Rūpniecības 4-4, LV 1010

Phone:

+371 66 167007, +371 26 586768

Fax:

+371 66 167006

E-mail:

[info@jkggroup.lv](mailto:info@jkggroup.lv)

Internet:

[www.jkggroup.lv](http://www.jkggroup.lv)

Contact person:

Jūlija Kozlova, member of the board



**JK consulting**  
g r o u p







OUR MISSION IS NEW LIFE

Member of Fertinova Clinics

AVA Clinic is chain of Finnish fertility clinics, established in 1993 at the territory of European Union with well recognized authority and impeccable reputation in its field.

The clinic was opened in Riga, Latvia, in 2005. Competence and international experience of Riga's team ensure high results of infertility treatment even in the most complicated cases. All the processes are performed in accordance with the European quality certificate ISO 9001: 2008.

**AVA Clinic offers the following services:**

- Infertility diagnostics and examinations
- All types of infertility treatments (IUI, IVF, ICSI)
- Freezing of genetic material
- Preimplantation genetic screening (PGS by NGS (Next Generation Sequencing))
- Infertility treatment using donor's sperm
- Infertility treatment using donor's eggs
- All range of gynaecological and obstetrical services



AVA Clinic

Vilandes str. 3, Riga, LV-1010

Phone: +371 6700 1007, cell phone: +371 2932 5578, fax: +371 67358 484

[ava.riga@avaclinic.lv](mailto:ava.riga@avaclinic.lv)

**[www.avaclinic.lv](http://www.avaclinic.lv)**

## Alphabetic index of companies

### A

AB Intelligence Services, Ltd .....	59., 61.
ADC, Ltd .....	50.
Ala Ligne, Ltd .....	37.
Amoko Finansiālā Grupa, Ltd .....	60.
ANVI AM, Ltd .....	28.
Ava Clinic, Ltd .....	63.

### B

Bioefekts, Ltd .....	23.
Burtņieku zirgaudzētava, Ltd .....	19.
Būvbalsts, Ltd .....	50.

### E

EK Auce, Ltd .....	32.
Elmeko, Ltd .....	41.
Erte Grupa, Ltd .....	18., 33.
Eva, Ltd .....	29.

### G

Getliņi EKO, Ltd .....	48.
Graanul Invest, Ltd .....	26.
Gundegas, Farm .....	20., 21.

### H

HM Rīga, Latvian-Germany Joint Venture .....	47.
--	-----

### I

iVF Rīga, Ltd .....	2nd cover
Ivonna, Ltd .....	27.

### J

Jaunzeltiņi, Ltd .....	56.
JK Consulting Group, Ltd .....	62.

### L

Lamela, Ltd .....	37.
Latvia Timber International, Ltd .....	38.
Latvian Union of Timber Quality Experts .....	38.
Latvijas valsts meži, JSC, LVM Sēklas un Stādi .....	24.

Leimen, Ltd .....	58.
Litex-Rīga, Ltd .....	30.

### N

Nākotne, Ltd .....	41.
Nielatec Baltija, Ltd .....	51.

### O

Oil Logistic, Ltd .....	22.
-------------------------	-----

### P

Paladia, Ltd .....	39.
Palleteries, Ltd .....	34.
Pindstrup Latvia, Ltd .....	25.
PL Logistics, Ltd .....	39., 52.
Proalifing, Ltd .....	31.

### R

Rīgas Doma pārvalde, Ltd .....	57.
Rīgas starptautiskā autoosta, JSC .....	55.
R.L.M., Ltd .....	45.

### S

Satema Baltic, Ltd .....	44.
Siljurgimet, Ltd .....	42.
Silviko, Ltd .....	35.
SKH, Ltd .....	42.
Sporta halle, Ltd .....	53.
Stafor, Ltd .....	40., 51.

### T

Transit Service Agency, Ltd .....	54.
-----------------------------------	-----

### U

Unika M, Ltd .....	46.
--------------------	-----

### V

Valmiera-Andren, Ltd .....	40.
Valtanks, Ltd .....	43.
Vit Būve, Ltd .....	36., 49.
Vlissa, Ltd .....	58.